

# The Hole Truth

New London Country Club

October 2010

(860) 443-6864 [www.newlondoncountryclub.org](http://www.newlondoncountryclub.org)

## Membership

By Lou Camerota, Chairman



September has afforded us some of the most beautiful days of the golfing season. Warm, dry autumn days with cool afternoons and evenings have followed August's "Dog days". Autumn is both a great time to play golf as well as an opportunity to savor the change of seasons in this lovely setting. I hope you take the opportunity to play some fall golf. While you're out there, observe the course setting and the seasonal colors. Take a moment to appreciate the beauty that New London Country Club offers us, its members....and don't miss an opportunity to share it with a guest or two!

A recent edition of Golf Digest listed some of the common membership problems of America's private golf clubs. I'm pleased to report that the board has been pro-active in addressing issues such as increasing membership, expanding previously restricted tee times, and budgets. Our focus is to keep the club on a solid financial footing while providing you the most value for your membership dollar.

Your support and recommendations on how to make NLCC a better value are greatly appreciated.

As always, be positive about your comments concerning the club, especially with non members. Positive comments about our club help greatly to attract new members. Conversely, negative chatter can be a turn-off and counterproductive. Please advise Tina, myself, or a board member of anyone you know who might be interested in joining NLCC. Every lead will be acted upon promptly. Remember: bringing a new member to the club benefits all of us, particularly the member who brought them.

Please join me in welcoming the following new members and I hope you all enjoy the season

*Thomas Kraemer*

*Mark Graves*

Lou Camerota  
Membership Chairman



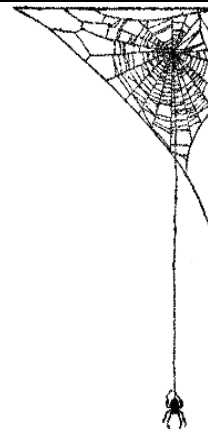
**GOLF**  
By Shawn Maguire, Chairman



**October 2010**

**Upcoming Events for October**

October 1-3 Men's Member / Member  
October 5 Final Women's Association Day  
October 6 Men's Senior Two Ball Open Championship t-times until 1  
October 16 Men's ABCD Jamboree 10am shotgun  
October 17 Men's Invitational t-times from 9-12:30  
October 22 Men's Association Party 6pm



**Golf**

**Golf Calendar**

It is that time of year when we start to formulate the golf calendar for the 2011 season. Please address your comments to myself or Kevin Shea and the golf committee will discuss.

**Golf Shop Credit**

Golf shop credits must be redeemed by December 1, 2010. The last day for special orders is October 31.

**Junior Golf Marathon for Kids**

Thanks to your support we raised a little over a \$1,000. Clinton pro Sean Busca, Matt Nolan & Kevin played 100 holes over the course of a day splitting time at NLCC & Clinton C.C.

**THANK YOU!!!!!!**

**ASSISTANTS RAFFLE!**

Kevin is raffling off \$400 in pro shop credit which is redeemable through the **2011** season. All the proceeds will go to our two assistants, David Rhinehart and Matt Nolan.

Please purchase your tickets in the pro shop or email me at [kevin@newlondoncountryclub.org](mailto:kevin@newlondoncountryclub.org)

1 ticket= \$20  
3 tickets= \$40  
10 tickets= \$100



Thank You for your support!

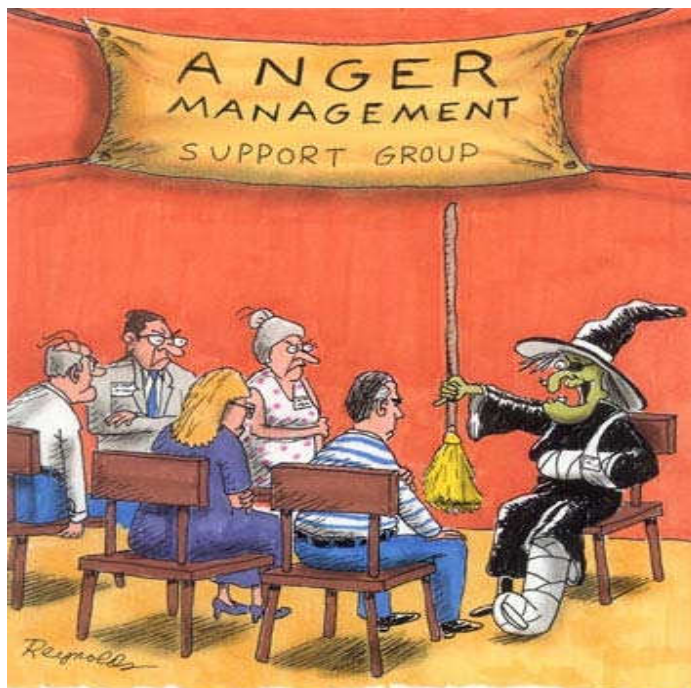
Shawn Maguire, Golf Chairman

## Golf Results



The **Yankee** / **Red Sox** challenge was a huge success. **116 players** competed and a great time was had by all. Special thanks to Yankee managers Joe Stellato, Hugh Bell and Red Sox managers Jim & Kevin O'Reilly.

The final score was Red Sox 17 and Yankees 12. Congratulations to the entire Red Sox team!



"My name is Helda, and I have a tendency to fly off the handle."





## GREENS

By Dan Rogers, Superintendent

It's hard to believe that my forth and by far most challenging season here at NLCC is coming to a close. The 2010 season will be remembered for unrelenting heat (daytime and nighttime), high humidity and lack of consistent rainfall. I managed these conditions with some significant budget reductions. We did our best to stay on budget and provide the best possible conditions; however the weather resulted in some overages that were necessary to keep the golf course alive and respectable.

This time of year I begin the process of planning for next season. Starting with developing a budget then basing everything I can or can not do off of the resulting number. I continually strive to get to that next level, there is a long way to go before the course is up to my standards. Countless projects need to be completed cart paths, tee, bunker and green surrounds, stone walls the list goes on. We face all these projects in conjunction with maintaining conditions that we can all be proud of in tough economic times. I do my best to develop a budget for this department that meets the needs of this golf course and its members at the same time allowing gradual improvement of conditions, all while keeping pace with the rising cost of goods and labor.

**I truly appreciate all the complements we get from the membership and believe that the membership's positive attitude and support regarding the golf course has helped this department be successful.**

As for the remainder of this season, I have plans to continue the process of repairing bunker faces, fixing cart paths, cleaning under brush from tree lines as always continuing the cultural agronomic plan I have put in place (continued aeration, fertilization, etc...)

I will keep the greens open as long as I can, they will however close. I get the question, "why do NLCC greens close when other courses remain open". The answer is that these greens are not sand based; they do not drain well once they become saturated. So they are either frozen or too soft to support play. Significant damage would result if they were left open.

Please feel free to E-Mail me with any comments or suggestions you have regarding the golf course. [Dan@newlondoncountryclub.org](mailto:Dan@newlondoncountryclub.org)

Thank you,  
Dan Rogers



## Women's Association

By Tracy Shoor, President



### *October 2010*

### *Women's Association*

Our fall meeting will be held on October 5th following a shotgun tournament. If you haven't already, be sure to sign up for golf and the luncheon. We would like to thank Christina and her staff for all the hard work they have put in this year making our Grill Room successful and for catering our luncheon.

After the Club Championship matches were rained out, we had a beautiful day for the rain date rounds. For those of you who were able to attend, Sue Delpriore and Sue Schmidtknecht had an exciting match to watch. Congratulations to Sue Delpriore, our Women's Club Champion and our runner up, Sue Schmidtknecht.

Also competing on Championship Day were our Flight Champions. Congratulations go to Eve Manthous, winner and Patty Cleary our runner up. This completed all our tournaments for the year. I would like to thank Patti Smith and her committee for the excellent job they did with this year's tournaments.

I want to thank my executive board and committee chairs for all their hard work and support these past two years. I also want to thank Kevin, Dave and Matt for all their support throughout the season that allowed everything to run as smoothly as it did.

I just want to remind everyone, that even though ladies days are over for the season, there are still many women that remain in the area. So please take advantage of the beautiful fall weather, contact other members and get out and play. To all our Ladies that leave for warmer climates, have a good winter and we look forward to seeing you next season.

It is with sadness we note the passing of Loraine Perrone a good friend and long time member of the NLCC Women's Association. Loraine and her husband Cam joined NLCC in 1984. To quote Loraine's obituary, golf was her real passion. In 2003 Loraine and Cam won the mixed couples four ball tournament and in 2004 Loraine and her partner, Dot Sauer won the four ball championship. In 2009 Loraine was the runner up in the Flight B championship. Loraine was a true competitor and champion. She will be missed. Our thoughts go to Cam and their family.

Be sure to contact me with any questions or comments. The easiest way to do so is to e-mail me at [louisb@snet.net](mailto:louisb@snet.net).

Tracy Shoor  
President

