



President's Message, Lou Camerota

As Old Man Winter begins to loosen his grip, our golf course begins to awaken from its seasonal slumber. However, anything but slumber characterizes what has been going on inside our club. These past four months have been a beehive of activity. We've been anything but asleep!

Our finance committee, led by Walter Barry and George Mitchell, has met regularly and has crafted a loan re-modification resulting in considerable savings that all but assures us of stable dues and NO SPECIAL ASSESSMENT for this year, and probably next!

The house committee under chair John Taglianetti is transforming the entrance way, foyer, banquet and grill rooms.... and that's only a start. Thanks to the efforts of his committee, the warmth, charm and personality of our club is reemerging. Come have a look!

Kevin O'Reilly's membership committee has developed a number of initiatives to attract and retain new members. The golf committee, led by Kevin Willoughby, has strong tournament bookings, and our pro, Kevin Shea, along with his staff, is ready to serve our needs. Thanks to volunteers John Gunderman and Rich Schmidtknecht, our golf carts are in good repair and ready to go. Greens chair Rob Renehan is, as always, working closely with course superintendent, Dan Rogers, who has the equipment serviced, the mowers honed and a crew that can't wait to get out there and manicure our golf course.

We had a wonderful and well-attended Valentine's day potluck with more special events scheduled for the coming year. Tina Wazny, our office manager, has done a wonderful job of coordinating these events. Not only are they fun to attend, they also serve as an opportunity for us to enjoy one another's company as well as introduce guests and prospective members to the club. Please plan to join in and bring along a friend or two! The next event is a St Patrick's Day party on Friday, March 19th.

Special points of interest:

- ◆ President's Message
- ◆ Treasurer's Report
- ◆ Membership
- ◆ Repairs
- ◆ Special Events
- ◆ Grill Room
- ◆ Golf



President's Message, Lou Camerota

I am pleased to announce that Bill Harris has joined the board. Bill has an extensive restaurant background and will chair our food & beverage committee. He and his wife, Kathy, have been members since 2004 and reside in Essex. Welcome, Bill!

To witness the volunteerism, dedication, and hard work among our membership is heartwarming. Committees accomplish their own work very efficiently, but do so with an eye toward how their work can support other committees and, ultimately, the club.

Noteworthy, too, is the dedication among our key employees, Tina Wazny, Dan Rogers, and Kevin Shea. They quietly go about their duties in support of the club and one another. We are fortunate to have employees of this caliber. Their hard work and mutual support is an example to us all and lends an enormous amount to the cohesiveness and success of New London Country Club.

2011 is going to be a great year at New London Country Club. I hope you glean that from this communication and plan to join in and have some fun with us this year, on and off the course.

Lou Camerota
President, New London Country Club



Treasurer's Report, *George Mitchell*

At the February Directors meeting we announced that Dime Bank had agreed to defer principal payments for the next 12 months. Provided we make substantial progress towards certain year-end goals, the bank will further extend the deferment for an additional six months. This amounts to approximately \$120,000 in increased cash flow this year and \$108,000 next year. This cash flow plus the cash savings (\$65,000 per year) from the interest reduction Dime Bank granted us last year, all but assures that we will not have a special assessment this year or next year if we meet the bank's goals.

These goals include increases in membership revenue, gross revenues, and year-end cash reserves, as well as restrictions on purchases of equipment. The goals are set high, but we feel we can attain most of them with your help and understanding.

As you know, we have already cut spending significantly. What we really need to do now is to increase our membership. After next year higher mortgage payments will be required to pay off the balance of the mortgage on schedule. Increased membership revenues will offset this higher cash outflow. That's where you can help. Every member needs to bring in new members. Be a salesperson for NLCC!

We are grateful to Dime Bank for its forbearance in these difficult times and to Walter Barry, our Finance Committee Chairman, for the many hours he assisted us in negotiating the terms of this mortgage modification.

George Mitchell,

Treasurer



The Hole Truth



Golf Report, Kevin Willoughby

Dear Fellow Members,

As a newly appointed Golf Chairman, I would like to welcome everyone to the upcoming 2011 golf season. This year's Golf Committee will be comprised of Hap Murano, Keith Barber, Patty Smith, and myself. The Golf Committee is looking for one (1) more member to join the committee. Please contact me at 860-514-9277 if interested. We are looking forward to serving the members in the best way possible too ensure that everyone has a fantastic 2011 golf season. As most of you are aware, the declining enrollment of our membership and the cuts that were made to the golf budget, it is up to us as members, to come together and help out as much as possible. The 2011 calendar is full of many upcoming outside golf tournaments in which we will be asking for assistance during the course of the year. We are hopeful that the revenue from these outside tournaments will continue in the future so that our dues will be maintained at the lowest possible rate. Some of the duties will include helping out on the range, monitoring the golf course, assisting in the bag room and making sure that everyone has a good time. Due to the cuts in the golf budget, we will be asking members to donate used golf balls for the driving range which graciously would be appreciated. I know that if we all come together through these hard times, we will be able to get through this season with moderate inconvenience.

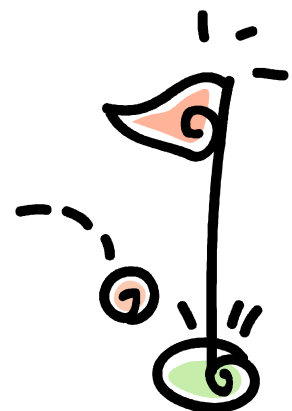
If you have any suggestions for the Golf Committee, please do not hesitate to approach any of the members on the committee. The committee will be meeting early in March to discuss way's to generate revenue and to bring new ideas to the table.

Also, enclosed in the Hole Truth are the Tuesday Night League, Seasonal Cart Rental and Speed Cart Storage rates and sign up forms.

I'm looking forward to a great 2011 season!

Kevin Willoughby, Golf Chairman

860-608-0539



New London Country Club



Seasonal Cart Registration

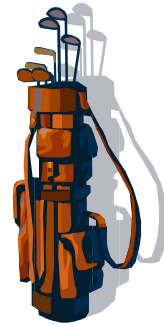
If you would like a cart for the 2011 season, please complete this form. Your payment and this form should then be mailed or delivered to: New London Country Club, 28 Lamphere Road, Waterford, CT 06385.

\$901.00 includes all taxes

(2011 per round rate is \$18.02 / 50 rounds)

Name: _____

Member Number: _____



Speed Cart Storage

For the 2011 season, the club will offer speed cart storage to members for \$100 (not including Kangaroo carts). There are a limited number of spots available (50). More may become available once the season starts. A lottery system will be used if more than 50 members sign up. The deadline to submit your registration form to the office or golf shop is May 1.

Name: _____

Member Number: _____

2011 TWILITE LEAGUE

League play will consist of two seven-week halves. The first half will be May 10 – June 21. The second half will be June 28 - August 9. All play is on Tuesdays with a 5:30 shotgun start. The finals, which consist of the winners of each half, will take place on August 16. The year-end banquet is August 23 at 7pm.

Format

The twilight league will consist of four flights with eight teams of two players in each flight. Each team will be put into a flight according to their total team handicap.

In each half, teams will play a four-ball match with individual matches also played within the four-ball match. There are three points available in each match. One point is awarded for the team match and an additional point is awarded for each individual match. Opponents for the individual matches are determined by the lowest hndcp. player per team playing against one another and the two remaining players will play against one another. In case of ties, half points will be awarded.

The team in each flight with the highest cumulative point total of each half will compete in a playoff for the championship of their flight on August 16 at 5:00.

******Players can choose their playing partner**

or sign up individually and be paired up with someone.

Please sign up by April 30

The following is the pecking order in case teams have to be left out to make flights even;

1. Played last year 2. Date entry form received

Twilight League Entry fee: \$60 (includes prizes and year-end banquet)

Name: _____ Partner: _____ (leave blank if you need someone)

Sub: _____ phone # _____ (please put my name on the sub list / no charge)

Opening night banquet provided by Corporate Caterer on Tuesday, May 3 at 6:00

Chicken Picatta in a garlic-lemon caper sauce, Sliced Roast Beef with pan gravy,

Penne Pasta with grape tomatoes, basil and fresh mozzarella, Green Bean Almondine, Roasted Red Potatoes, Garden Salad & Dessert & Coffee Service.

\$24.00 per person (includes tax & gratuity)



February 2011

House, John Taglianetti

In response to considerable feedback last year, the House Committee is working hard to change to look and feel of the pub room and foyer. Much work is ongoing to clean and transform the pub room to one that is more focused on NLCC. Considerable work is also ongoing in the foyer to replace the worn carpet with a new carpet and tile combination and to apply a fresh coat of paint. We are also addressing many neglected areas in the banquet room including repainting selected areas and finishing the renovation of the center archway and ceiling area where the room divider once stood. Many smaller repairs and improvements are also being made.

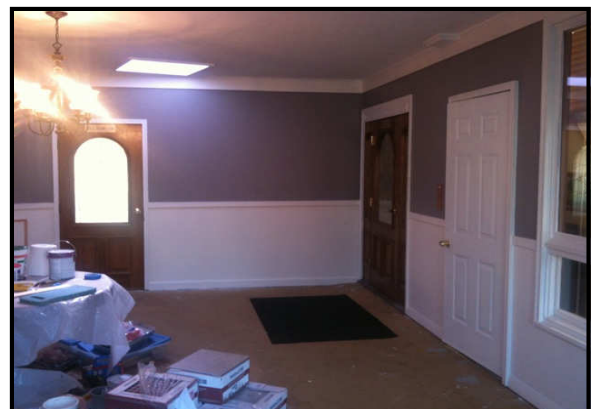
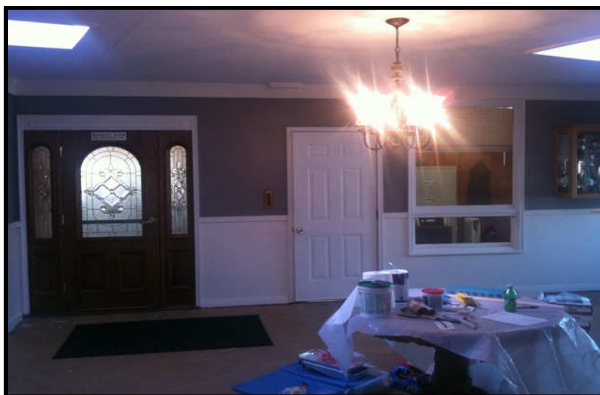
Several members have put in countless hours working in the pub room, foyer, and banquet room to make the clubhouse more inviting to the entire membership and make it more attractive for outside events.

The January inspection of the fire and burglary alarm systems identified that the Fire Alarm Monitoring Panel input power circuit board suffered damage, the result of a power surge most likely from an electrical storm. Because of the panel's age and obsolete parts it could not be repaired. A new panel has been installed and we contacted our insurance provider to determine if any of the replacement cost can be recovered.

We have two events planned and we need your help. On Saturday March 26th we need volunteers to help clean up both the men's and ladies' locker rooms. Please let me know if you can help, even if for only a couple of hours. On Saturday & Sunday April 30th and May 1st we will hold our annual Spring Cleanup. There are many repairs that need to be made and much painting that needs to be done around the clubhouse. Please contact me if you can support either the Spring Cleanup event. If you have time before the spring cleanup weekend there is much that can be done as the weather permits. There are many independent projects that need attention. Your efforts will be greatly appreciated.

There are many factors that go into the decision for a new member to join NLCC, and we shouldn't under estimate the condition of the clubhouse on their decision. I clean and well maintained clubhouse benefits us all. If you have any questions, comments or ideas, please do not hesitate to contact me either at 860.447.9439 or by e-mail at intag@ct.metrocast.net.

John Taglianetti, House Chairman



FOOD & BEVERAGE, BILL HARRIS



As the newest member of the Board, I would like to take this opportunity to tell you something about myself and my goals as chairman of the Food and Beverage Committee.

In my past, I managed a full service restaurant for 6 years and I ran a banquet facility for 2 years. Although it was some time ago, the lessons I learned have sustained me throughout a long career in sales with many successes to mark the way.

For the past 7 years Kathy and I have enjoyed our golf experience at NLCC. We have shared many fun times on and off the course with friends new and old and we have come to appreciate the experience that keeps us looking forward to each new season. Part of that is the expectation that the food and beverages we enjoy enhance the ambiance of our club.

Being on the BOD is an opportunity to help carry forward that experience in a way that improves enjoyment for everyone. So that we on the Food and Beverage Committee can serve you better, we would like to hear from you. Please do not hesitate to email me your suggestions or concerns regarding service, menu items, revenue generation and cost savings. Feel free to approach me at the club as well. Please remember, if we do not know your concerns we cannot address them.

Together, let's make this year the best ever!

Bill Harris

wdh5@man.com

Save the Dates:

- March 19th - St. Patrick's Day Celebration. Enjoy corned beef & cabbage, green beer & cocktails, and the company of your fellow NLCC members. Tickets are \$10 per person. Bring a guest & don't forget to wear green!!
 - Beer signs are being raffled off!
- May 7th - Enjoy Dinner & a Show! Comedian Dave Goodman will be at NLCC for a fun-filled evening. Cocktail hour begins at 5 p.m., dinner will be served at 7 p.m. Ticket prices will be announced soon. Tickets must be purchased before the show. Reserve your table soon, there will be a limited number of tickets sold.
- May 8th - Mothers Day Breakfast. Bring mom out for a wonderful breakfast at NLCC. Serving pancakes, fresh fruit, bacon/sausage, and mimosas! Reserve your table.

Membership, Kevin O'Reilly

The Membership Committee has been working hard for the past few months to try to increase membership at NLCC. The committee called approximately 200 former members to offer them the opportunity to return to NLCC for a reduced dues amount for the year 2011. Members who return with this offer will then be allowed to resume normal membership for the 2012 season at the regular rate of dues. This has generated some interest and we would ask present members to reach out to anyone who resigned before 12/31/10 to consider this offer. In addition, the Board passed three new membership changes which we hope will generate interest. Associates under forty years of age now fall into two categories and the dues for these ages were reduced. We also passed a trial membership for 2011 for \$2750 with the added incentive that if three or more people join together, the rate is \$2500. The Board also approved a membership development program by opening the course up for play for non-members on a limited basis to be controlled by the pro shop. New members will provide some personal information (name, phone number, address) which will then be followed up with a call from a membership committee member to recruit a future member. A member of the committee will then follow up with a call to anyone who plays with us to try to recruit these persons for a possible trial membership. We are hoping that these changes bring in new and younger members and at the same time raise needed revenue for NLCC. If anyone has other ideas for the membership committee, feel free to contact us with your ideas. Kevin O'Reilly

Committee members:

Lou Camerota, Patty Cleary, Diane Smith, Kathy Vannini, Sue Schmidtknecht, John Taglianetti, Hap Murano, Jon Morosini, Kevin Shea, and Kevin O'Reilly (chair)

Welcoming our Newest Members!

Frank White & Matt Kane

& Welcoming Back.....

Mathew Green

Ed Parke

Robert Maguire

Please remember to visit www.danrogersgolf.com for up to date information regarding course conditions. I update the site regularly so the membership can gain insight to what's going on in the maintenance department. Once in the site go to the Blog/Course Updates to review recent posts. When the season gets going I will start using the Forum section to better communicate with all of you. If you have any questions regarding the use of the web site contact me at dan@newlondoncountryclub.org

Thanks,

Dan Rogers

Superintendent

