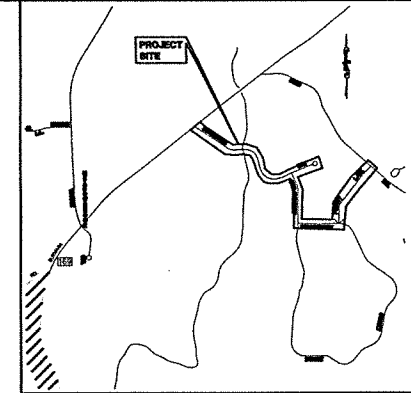


# STRAWBERRY FIELDS SIDEWALK IMPROVEMENTS PHASE 1 Town of Lisbon, Connecticut

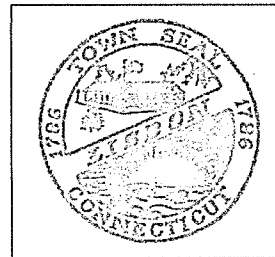
Project No. 72-81



**LOCATION MAP**  
SCALE: 1"=1000'

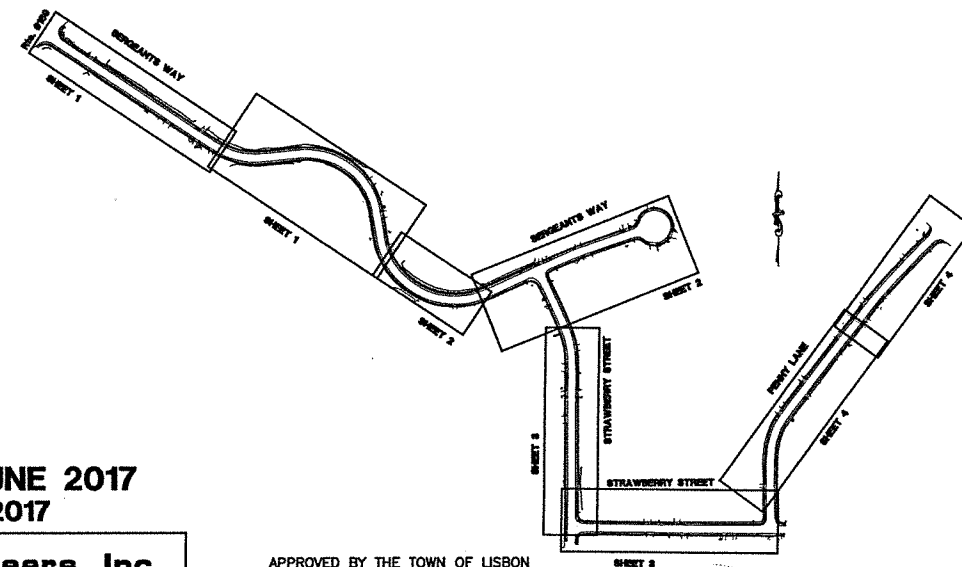
**LEGEND TO DRAWINGS**

	EXISTING CATCH BASIN & CULVERT
	EXISTING UTILITY POLE
	EXISTING TREE OR SHRUB
	EXISTING TREE / SHRUB LINE
	FENCE
	STONE WALL
	RETAINING WALL
	CONTOUR ELEVATION
	OVERHEAD WIRES
	EXISTING SEWER & MANHOLE COVER
	EXISTING WATER SERVICE/MAIN & VALVE AND SHUTOFF
	PROPERTY LINE
	PROPOSED SILT FENCE
	EDGE OF WETLANDS
	SIGNS
	FLARED END UNIT
	HYDRANT
	DRILL HOLE
	IRON PIN, IRON PIPE
	MERE STONE, CONC. HIGHWAY MONUMENT, CONC. MONUMENT
	LAMPS



**INDEX TO DRAWINGS**

DRAWING NO.	DESCRIPTION OF DRAWINGS
1	SITE PLAN
2	SITE PLAN
3	SITE PLAN
4	SITE PLAN
5	GENERAL NOTES and DETAILS



Revised JUNE 2017  
MAY 2017

PREPARED BY CLA ENGINEERS, INC.

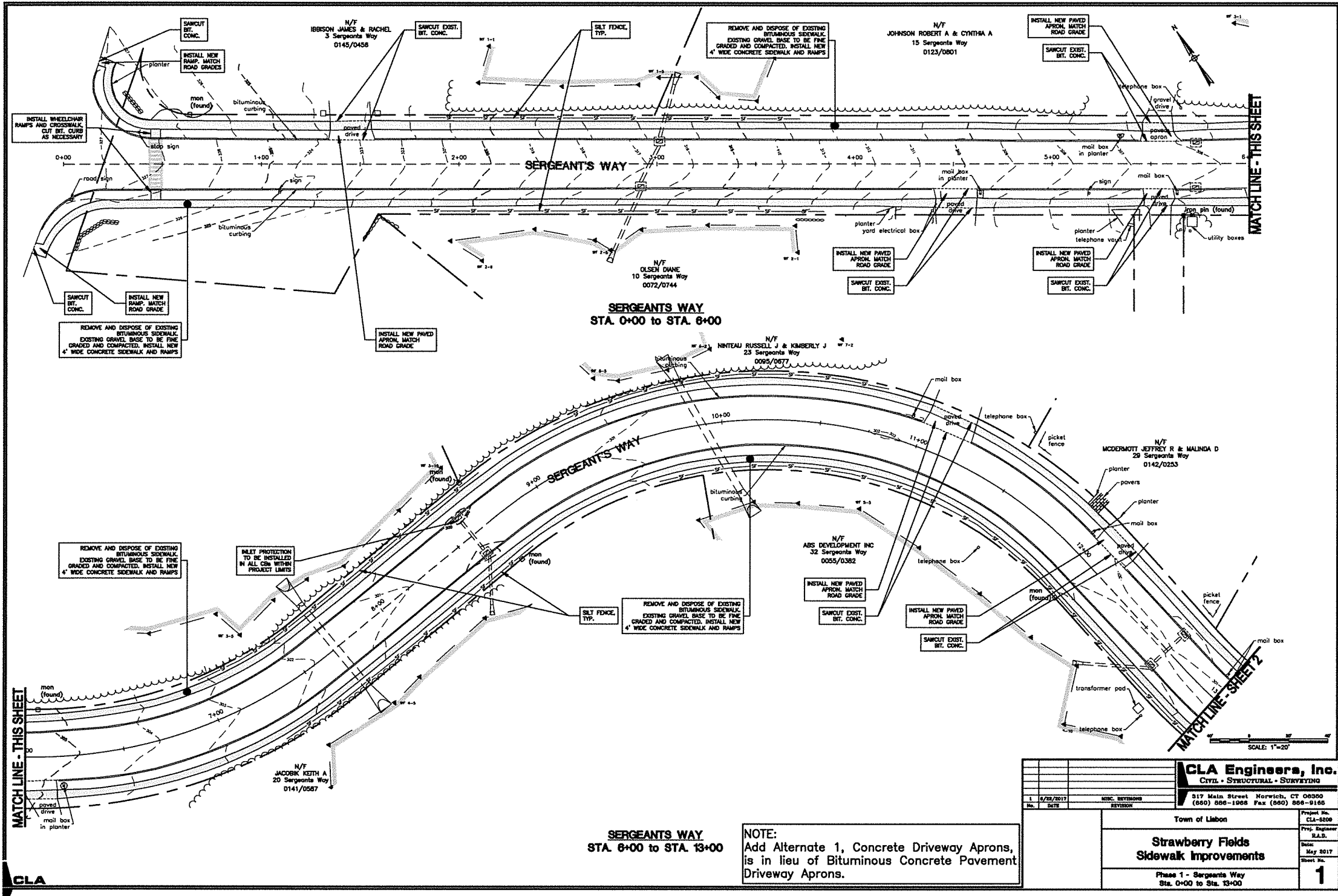
*Robert A. DeLuca*  
Robert A. DeLuca, P.E. 7/5/17 Date

**CLA Engineers, Inc.**  
CIVIL · STRUCTURAL · SURVEYING  
317 Main Street Norwich, CT 06360  
(860) 886-1966 Fax (860) 886-9165

APPROVED BY THE TOWN OF LISBON

*Thomas W. Sparkman*  
Thomas W. Sparkman, First Selectman 7/5/2017 Date





**SERGEANT'S WAY  
STA. 0+00 TO STA. 6+00**

**SERGEANT'S WAY  
STA. 6+00 TO STA. 13+00**

**NOTE:**  
Add Alternate 1, Concrete Driveway Aprons,  
is in lieu of Bituminous Concrete Pavement  
Driveway Aprons.

MATCH LINE - THIS SHEET

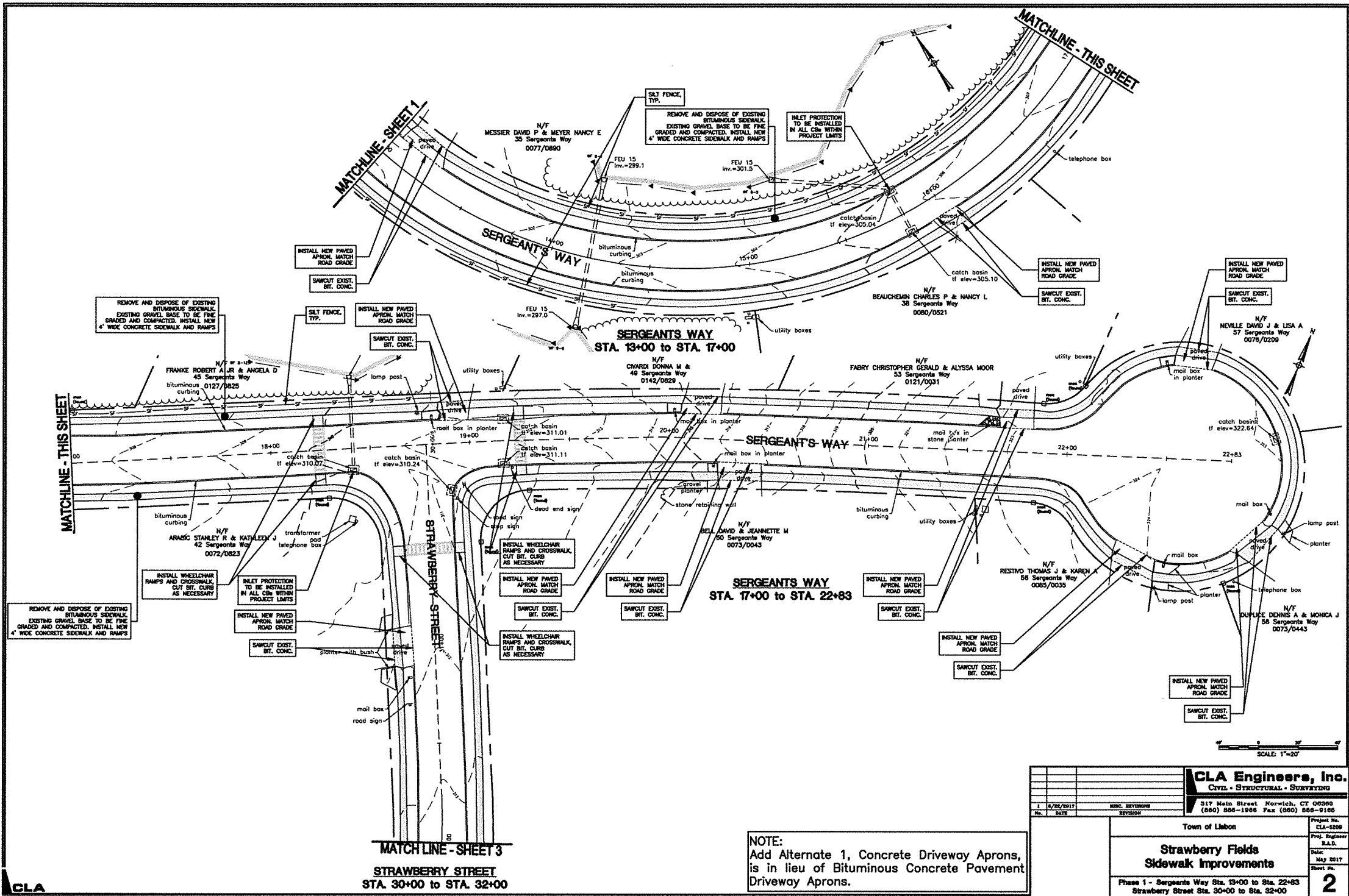
MATCH LINE - SHEET 2

MATCH LINE - THIS SHEET

**CLA**

<p><b>CLA Engineers, Inc.</b> Civil - Structural - Surveying 317 Main Street Norwich, CT 06250 (860) 886-1266 Fax: (860) 886-9166</p>		<p>Project No. CLA-5208 Proj. Engineer E.A.S. Date May 2017 Sheet No. <b>1</b></p>
<p>1 6/25/2017 MTRC, BETHUNO REVISED</p>	<p>Town of Lisbon</p>	<p>Phase 1 - Sergeant's Way Sta. 0+00 to Sta. 13+00</p>

SCALE: 1"=20'



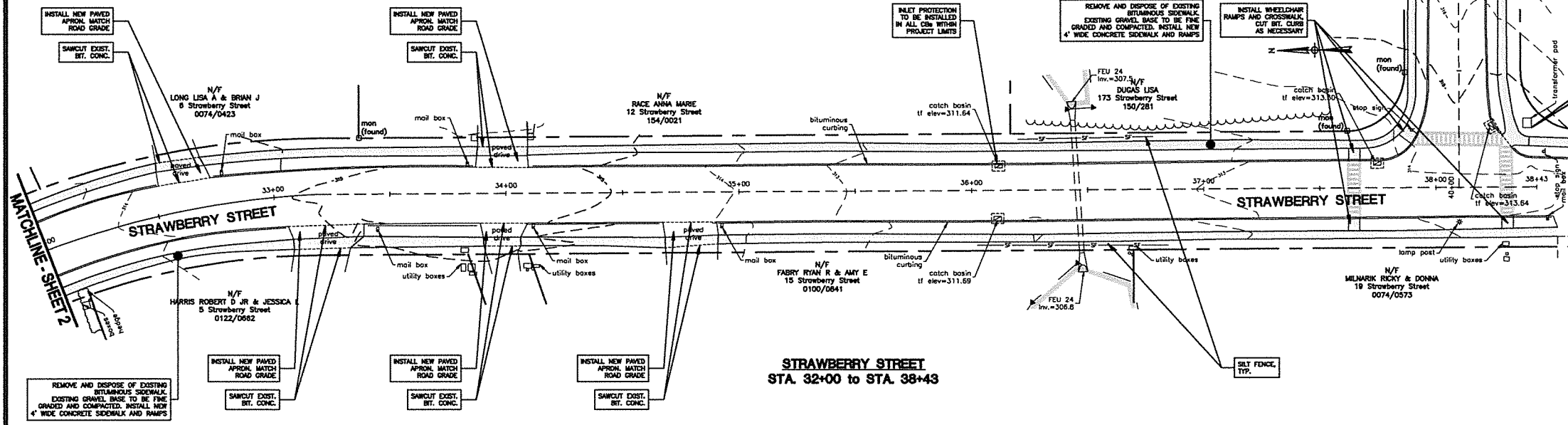
CLA

NOTE:  
Add Alternate 1, Concrete Driveway Aprons,  
is in lieu of Bituminous Concrete Pavement  
Driveway Aprons.

<b>CLA Engineers, Inc.</b> CIVIL • STRUCTURAL • SURVEYING 317 Main Street Norwich, CT 06290 (860) 886-1888 Fax (860) 886-2100	
Project No. CLA-6209	Project Engineer E.A.D.
Date May 2017	Sheet No. <b>2</b>
Town of Lisbon <b>Strawberry Fields          Sidewalk Improvements</b> Phase 1 - Sergeants Way Sta. 13+00 to Sta. 22+83 Strawberry Street Sta. 30+00 to Sta. 32+00	

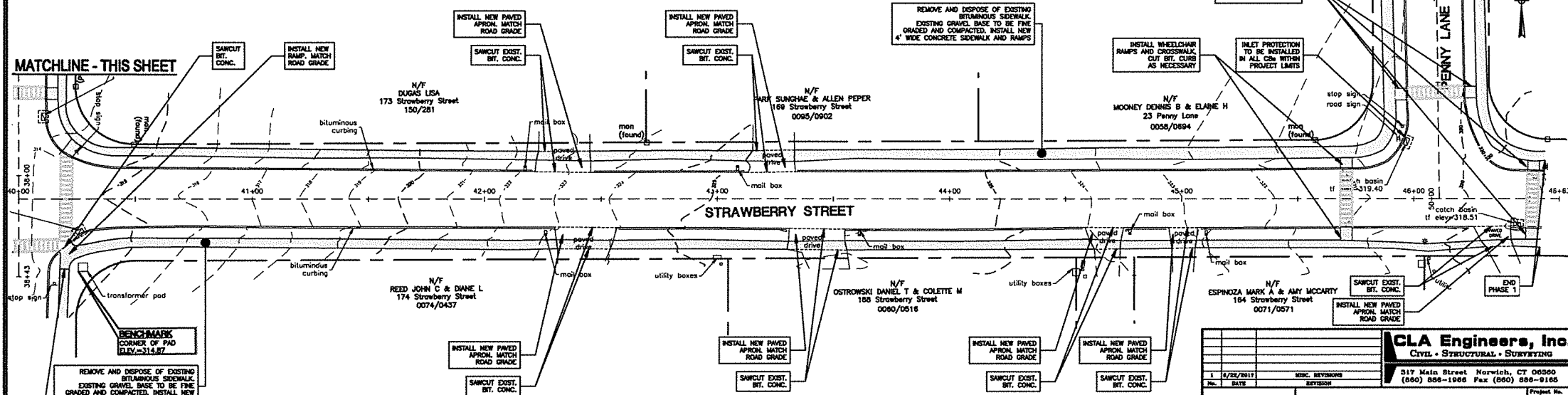
SCALE: 1"=20'

MATCHLINE - THIS SHEET



**STRAWBERRY STREET  
STA. 32+00 to STA. 38+43**

MATCHLINE - SHEET 4



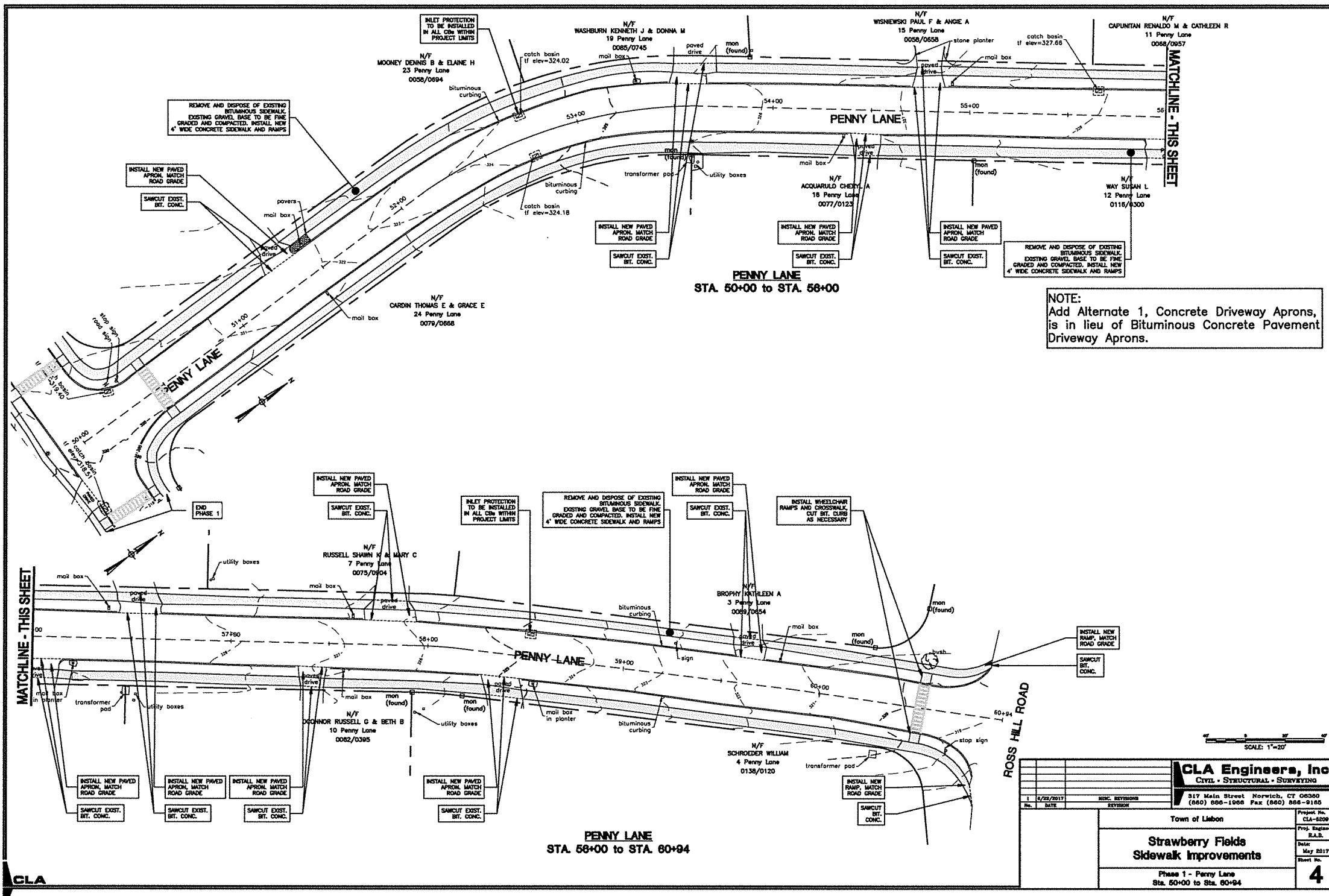
**STRAWBERRY STREET  
STA. 40+00 to STA. 46+83**

NOTE:  
Add Alternate 1, Concrete Driveway Aprons,  
is in lieu of Bituminous Concrete Pavement  
Driveway Aprons.

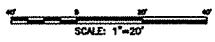


<b>CLA Engineers, Inc.</b> Civil - Structural - Surveying		317 Main Street Norwich, CT 06260 (860) 888-1888 Fax (860) 888-9188	
1	6/22/2017	REVISION	REVISION
Town of Lisbon		Project No. CLA-5208	Prof. Engineer E.A.D.
<b>Strawberry Fields Sidewalk Improvements</b>		Date May 2017	Sheet No. <b>3</b>
Phase 1 - Strawberry Street Sta. 32+00 to Sta. 38+43 Strawberry Street Sta. 40+00 to Sta. 46+83			



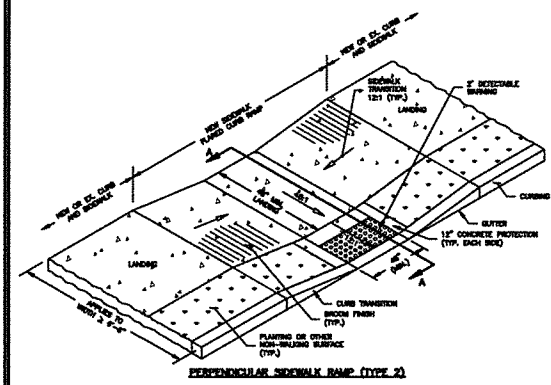
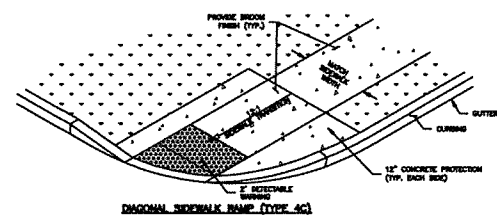
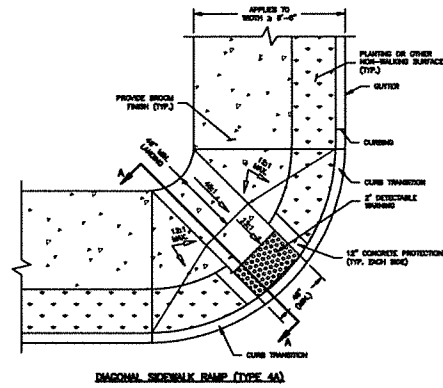


**NOTE:**  
 Add Alternate 1, Concrete Driveway Aprons,  
 is in lieu of Bituminous Concrete Pavement  
 Driveway Aprons.

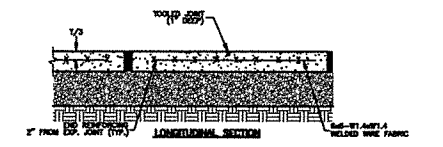
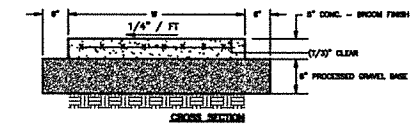
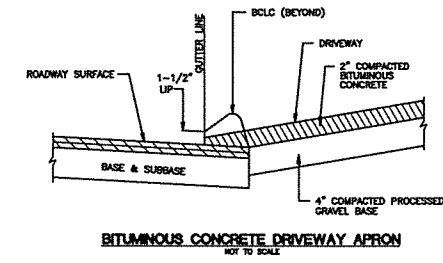
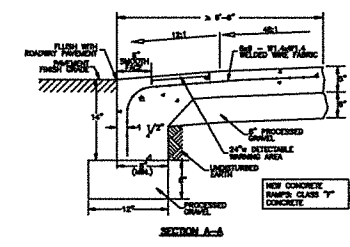
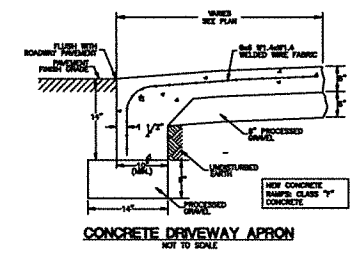


<b>CLA Engineers, Inc.</b> CIVIL • STRUCTURAL • SURVEYING 317 Main Street Norwich, CT 06240 (860) 686-1066 Fax (860) 686-9165		Project No.	CLA-5209
		Prof. Engineer	E.A.R.
Town of Lisbon		Date	May 2017
<b>Strawberry Fields Sidewalk Improvements</b>		Sheet No.	<b>4</b>
Phase 1 - Penny Lane Sta. 50+00 to Sta. 60+94			

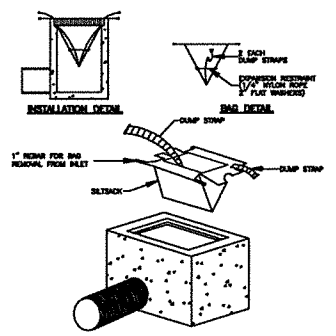
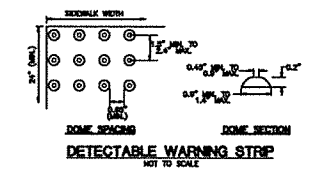
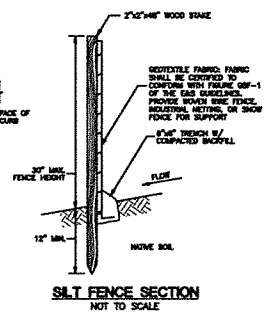
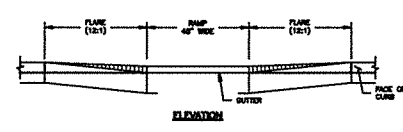
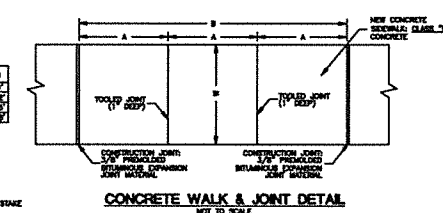
**CLA**



**CONCRETE SIDEWALK RAMP DETAILS**  
NOT TO SCALE



THICKNESS	A	B
1	2 1/2"	2 1/2"
2	2 1/2"	2 1/2"
3	2 1/2"	2 1/2"
4	2 1/2"	2 1/2"



**INLET SEDIMENT CONTROL DEVICE DETAIL**  
NOT TO SCALE

**GENERAL NOTES**

- TOPOGRAPHY ESTABLISHED BY CLA ENGINEERS, INC.
- CONTRACTOR SHALL CONTACT "CALL BEFORE YOU DIG" AT 1-800-922-4455 OR 811 PRIOR TO THE START OF CONSTRUCTION.
- INFORMATION SHOWN ON THE DRAWINGS RELATING TO MATERIALS, CONDITIONS, AND/OR LOCATIONS OF EXISTING STRUCTURES AND UTILITIES HAS BEEN COMPILED FROM AVAILABLE INFORMATION INCLUDING FIELD SURVEY, UTILITY COMPANY AND TOWN RECORD MAPS AND DRAWINGS, AND IS NOT GUARANTEED ACCURATE OR COMPLETE.
- THE CONTRACTOR SHALL EXCAVATE TEST PITS AS NEEDED OR AS DIRECTED BY THE CITY TO VERIFY UTILITY INFORMATION.
- REMOVAL OF BITUMINOUS CONCRETE PAVEMENT AND BITUMINOUS CONCRETE CURBING SHALL BE PAID FOR UNDER EARTH EXCAVATION.
- THE ALLOWABLE WORKING HOURS FOR THIS PROJECT SHALL BE LIMITED TO 7:00 am TO 4:00 pm, EXCLUSIVE OF WEEKENDS AND CITY HOLIDAYS.
- ALL WORK AND MATERIALS SHALL BE IN ACCORDANCE WITH THE "STATE OF CONNECTICUT DEPARTMENT OF TRANSPORTATION STANDARD SPECIFICATIONS FOR ROADS, BRIDGES AND INCIDENTAL CONSTRUCTION, FORM 816, 2004" AND SUPPLEMENTS THERETO UNLESS OTHERWISE NOTED.
- THE CONTRACTOR SHALL BE RESPONSIBLE FOR ALL MAINTENANCE AND PROTECTION OF TRAFFIC AND TRAFFIC CONTROL.
- THE CONTRACTOR SHALL CONFINE HIS OPERATIONS AND ACTIVITIES FOR CONSTRUCTION PURPOSES WITHIN THE STREET LINES AND PROPERTY AS SHOWN ON THE DRAWINGS. THE CONTRACTOR SHALL BE RESPONSIBLE FOR ANY DAMAGE TO EXISTING PAVEMENT, ROADWAY, SIDEWALKS, ETC., OUTSIDE OF THE PROJECT AREA AND SHALL REPAIR SUCH DAMAGE AT NO ADDITIONAL COST TO THE CITY.
- THE CONTRACTOR SHALL BE RESPONSIBLE FOR ALL CONSTRUCTION SURVEY AND STAKEOUT AS THEY NEED.

**CONSTRUCTION NOTES**

- THE CONTRACTOR IS RESPONSIBLE FOR OBTAINING ALL NECESSARY PERMITS PRIOR TO THE START OF CONSTRUCTION.
- THE CONTRACTOR TO NOTIFY THE DEPARTMENT OF PUBLIC WORKS PRIOR TO THE START OF CONSTRUCTION AND SHALL COORDINATE ACTIVITIES TO ALLOW FOR INSPECTIONS.
- THE CONTRACTOR SHALL PROVIDE QUALIFIED TRAFFIC CONTROL PERSONNEL DURING ALL CONSTRUCTION ACTIVITIES WITHIN THE PUBLIC RIGHT OF WAY.
- THE CONTRACTOR SHALL NOT MAKE ANY FIELD CHANGES WITHOUT THE PRIOR APPROVAL FROM THE DEPARTMENT OF PUBLIC WORKS.

<b>CLA Engineers, Inc.</b> CIVIL • STRUCTURAL • SURVEYING 817 Main Street Norwalk, CT 06850 (860) 868-1888 Fax (860) 868-9185		Project No. CLA-5206 Proj. Engineer E.A.B. Date May 2017 Sheet No. <b>5</b>
1 6/25/2017 DATE REVISIONS REVISION	Town of Lisbon <b>Strawberry Fields Sidewalk Improvements</b> GENERAL NOTES & DETAILS	