



# The Lisbon Quarterly

A Newsletter for Lisbon Residents



## Connecticut 2016 Trails Day Saturday & Sunday, June 4 & 5

Once again Lisbon will be participating in the Connecticut Trails Day Celebration. The Recreation Committee is sponsoring activities on both Saturday June 4<sup>th</sup> and Sunday, June 5<sup>th</sup>. See the flyer on Page 2 for details.

For publications regarding hiking/biking trails and just about any other out door activity go to the Department of Energy and Environmental Protection (DEEP) website at [www.ct.gov/deep/store](http://www.ct.gov/deep/store).

### Lisbon Farmers' Market

By Elaine Joseph

The 2016 market season is shaping up nicely for the Lisbon Farmers' Market! Now in our fourth year, we have some new and exciting vendors joining us, as well as many of our regular vendors from past seasons (go to [www.lisbonfarmersmarket.com](http://www.lisbonfarmersmarket.com) for an updated list of our vendors). If you have a CT grown or produced product and would like to be a vendor, we will consider your application for full time (\$80 per season) and guest vendor spots (\$20 per day). More information about becoming a vendor may be found on our website as well. We are also interested in hearing from local acoustic musicians, authors and non-profits for special market events. We also welcome volunteers – either at the market itself, or with helping us in a “behind the scenes” capacity.

The Lisbon Farmers Market will open for the 2016 season on Thursday, June 30 (3:30 – 6:30), and will be held every Thursday through early October. We are located at Lisbon Meadows

Park, next to the “barn” on Route 169 - South Burnham Highway. We hope to see you there each week, to provide you with healthy, locally grown foods and other locally made products.

*Lisbon Farmer's Market – Supporting Local Farmers and the Good Health of the Community*

### Lisbon Historical Society Quarterly Notes

Last fall's cutting and splitting project with Boy Scout Troop 73 whittled down the massive wood pile from a downed tree at Burnham Tavern. After all of that work, there is enough wood left to resume the project this spring. We now have enough wood to light up the fireplaces and bake oven for a couple of years.

Our restoration carpenter is working on the front of the Bishop House. Phase I entails evaluating the sill plate, restoration of the kitchen door and restoration of the windowsills. Upon completion of the carpentry, the east and north sides will receive a fresh coat of paint. The east side of the house takes a beating compared to the other three; factors such as vehicular pollution, road salt and sand, heavy truck vibrations and over 200-hundred year old clapboards may all contribute to the peeling of paint and cracked window glass. The carriage shed is on schedule for cleaning and sealing this year as well. Inside, all of the fireplaces in the Bishop House were professionally inspected, and cleaned in time for the annual 5<sup>th</sup> grade field trip.

The first class of 23 students, their teachers, and parent chaperons visited the John Bishop House on May 13 for a day

of open hearth cooking. The students, while learning about the kitchen tools and dishware, prepared and baked an apple pie and tea cakes in the bake oven, cooked a chicken in the reflector oven, and codfish cakes on a hanging skillet, and typical of children of the day, they hauled wood for the fireplaces and did the dishes. The group was enthusiastic, engaged learners and really enjoyed sampling the fruits of their labor. For many it was the first time they had been in the John Bishop House; the Lisbon Historical Society appreciates the opportunity Lisbon Central School gives us to introduce our young citizens to this town treasure.

The summer open house program commences on June 4. The John Bishop House is scheduled to open every Saturday, 10 a.m. - 2 p.m. There is no charge to tour the house and gardens or to avail oneself of the Town Historian's research materials, and you never know, we might be cooking!

Although the Burnham Tavern is an archeological and restoration site, and as such is not yet open to the public, the property will see activity this summer. Continued on Page 6..

### On the following pages...

- Pg. 2.....CT Trails Day - June 4 & 5
- Pg. 3.....Light House Cruise Trip
- Pg. 4.....Farmers Market Opening
- Pg. 5.....Lobsters & DOO WOP Trip
- Pg. 6.....HS Quarterly Notes contd.
- Pg. 6.....2016 Fall Festival



200+ EVENTS STATEWIDE

CONNECTICUT 2016

# Trails Day

CELEBRATION

Saturday & Sunday  
June 4 & 5

CONNECTICUT  
Forest  
& Park  
ASSOCIATION

More events online at  
[www.ctwoodlands.org](http://www.ctwoodlands.org)

## The Blue-Blazed Hiking Trail System

Over 825 Miles of Connecticut Trails

Visit the online map at  
[www.ctwoodlands.org/blue-trails-map](http://www.ctwoodlands.org/blue-trails-map)  
to plan your next adventure

Established and maintained by Connecticut  
Forest & Park Association volunteers since 1929.  
Look for the blue-oval signage throughout the state.

### 86. LISBON

#### Trail Maintenance

Saturday, June 4, 8:00am - 11:00am. **Lisbon Meadows Park.** Join members of the Lisbon community in beautifying the trails at Lisbon Meadows Park. Bring wheelbarrows, shovels, clippers, and rakes to the parking lot and help make the trails safe. Distance: 1 - 3 miles. Meet at Lisbon Meadows Park pavilion. Entrance on Rte 169, approx 1 mile north of I-395 overpass. Leader: Chad Johnson. Sponsored by Lisbon Recreation Committee. Rain cancels. Pre-registration is NOT NECESSARY. Questions: 860-617-1144, [runninboy@comcast.net](mailto:runninboy@comcast.net).

### 85. LISBON

#### Run

Sunday, June 5, 10:00am - 12:00pm. **Lisbon Meadows Park.** Join us for the 3rd Annual CT Trails Day Lisbon Trail Fun Run. There will be a 5K cross country run for adults and a 1-mile and 1/2 loops for kids. Ribbons to all participants. Distance: 3 miles. Meet at Lisbon Meadows Park pavilion. Entrance on Rte 169, approx 1 mile north of I-395 overpass. Leader: Chad Johnson. Sponsored by Lisbon Recreation Committee. Rain or shine. Pre-registration is NOT NECESSARY. Questions: 860-617-1144, [runninboy@comcast.net](mailto:runninboy@comcast.net).

## New England Trail

NATIONAL SCENIC TRAIL

NATIONAL PARK SERVICE U.S. DEPARTMENT OF THE INTERIOR

FROM THE SOUND TO THE SUMMITS  
*Find your adventure*



# LIGHTHOUSE CRUISE

**TUESDAY, JUNE 28<sup>TH</sup>**

**Leaving at 11:15**



**Bus & Ticket \$30**

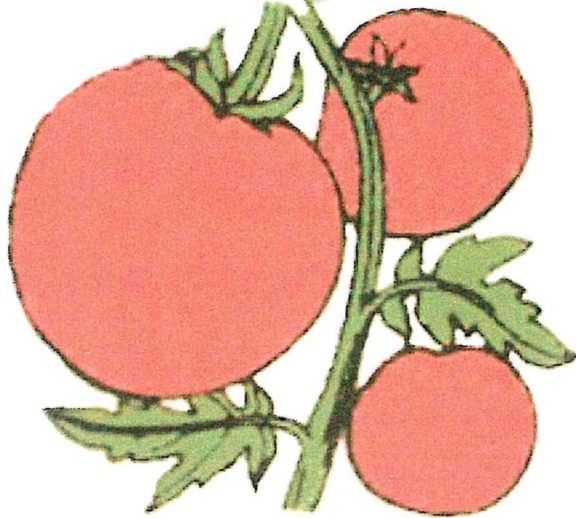
**cruise starts at 12:30 for approx. 2 hours**

**Followed by lunch on your own at  
Capt. Scott's Lobster Dock**

- New London Harbor Light
- New London Ledge Light
- Avery Point Light
- Race Rock Light
- Plum Island Light
- Little Gull Light
- North Dumpling Light
- Orient Point Light
- Long Beach Bar (Bug) Light—new!
- Fort Trumbull
- Fort Griswold
- and much more!

There is a snack bar on the ferry, or feel free to bring your own

# Lisbon



## FARMERS' MARKET

**Every Thursday**  
**Opens June 30**  
**3:30 P.M. - 6:30 P.M.**

At Lisbon Meadows Park, Route 169

Locally grown vegetables, fruits,  
plants, preserves, baked goods,  
maple syrup and honey products,  
organic and heritage produce,  
eggs, local crafters and more!

### ***Themed Market Dates:***

June 30 - Opening Day

July 7 - Spice it Up

July 14 - Pet Week

July 21 - Celebrate Seniors

July 28 - Book Swap

August 4 - Food Pantry

August 11 - Health & Wellness Week

August 18 - Artists & Artisans

August 25 - Back to School

September 8 - Book Drop

for Slater Library

September 15 - Orchard Pickings

September 29 - Autumn Bonfires

*"Like" our Facebook page for more details about our themed markets  
- live music, special vendors, and more!*

[www.lisbonfarmersmarket.com](http://www.lisbonfarmersmarket.com)

Supporting *Local Farmers* and the *Good Health* of the Community!





Lisbon Senior Center presents ...

# TWIN LOBSTERS & DOO WOP

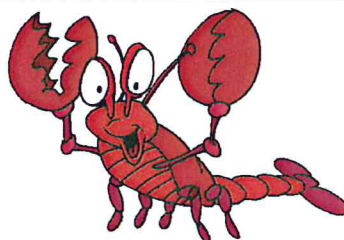
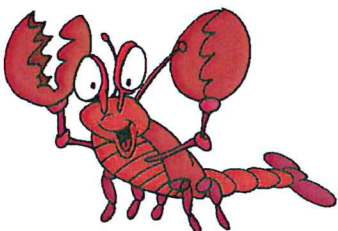
## *With the 50's "CORVETTES BAND"*



Wednesday,  
July 13, 2016

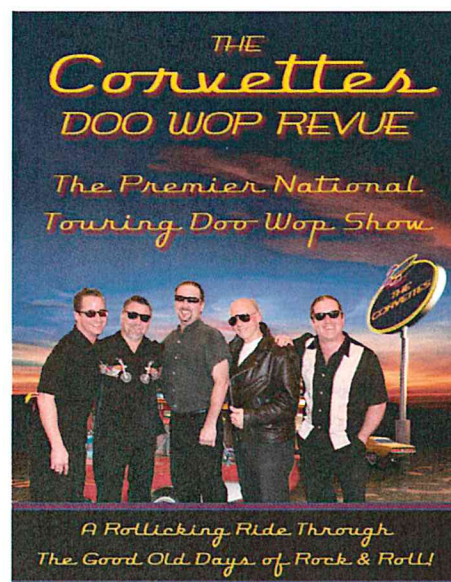


*This High Energy DOO WOP Show is one of the best in the New England area. The Corvettes have been around for the last 25 years! You will enjoy this extremely talented group.*



### Package Includes:

- Roundtrip Motor Coach Transportation
- TWIN LOBSTERS with drawn butter (Prime Rib is the Substitute)
- The Corvettes Doo Wop Review
- All Gratuities



**Meal Includes**  
Clam Chowder  
Rolls and Butter

**Twin Lobsters  
OR Prime Rib**

Baked Potato  
Vegetable  
Ice Cream & Coffee

**\$85**

Per Person

**Contact:  
Karen**

**860-376-2329**



**TWO LOBSTERS  
& DOO WOP SHOW!**



Trip Departs 9:15 a.m.  
Lisbon Senior Center  
Returns 4:30 p.m.

**HUKE LAU**

contd. from Pg. 1

A local farmer from Canterbury has leased the fields and intends to plant hay and corn. LHS Building and Grounds Chairman, Ken Mahler has undertaken the work to make the fields more accessible for today's heavier farm equipment. He reports that having the fields in use will avoid mowing this summer, which takes about five days with one volunteer and town tractor with a Brush Hog. Farming or cutting them avoids the historic fields from becoming overgrown with saplings and brush. — Ken recently used a small excavator and loader to clear out the brambles, briars, vines and small trees around the old barn, which was razed years ago. The foundation shows an early footprint of the farming there, and has revealed some interesting artifacts, and stones.

The chimney and fireplaces in the Tavern were also inspected this spring. It was reported that the chimney above the roof line is in need of work but on the inside of the house, it is in spectacular condition. The kitchen fireplace has a false wall that should be removed to expose its true depth. (we had previously discovered the original pintle and crane). The smoker in the attic is original and two of the fireplaces on the second floor are in good condition and require little work. A third, 2<sup>nd</sup> floor fireplace will be inspected when a much later wood/coal stove is removed. Like the Bishop House, the Anshei Israel Synagogue will get some repainting this summer. Unless we have a scheduled event, the synagogue is open by appointment. To arrange a visit, call Paula Adams at 860-887-8052. "A Refuge in the Country", the history of the synagogue is available at no charge at the Bishop House and the town hall.

In other news, a recent public hearing on the updated Route 169 (Scenic By-Way) Corridor

Management Plan held at the Lisbon Senior Center discussed extending the scenic by-way designation south to Ponemah Mill and perhaps the village of Taftville. LHS Treasurer Ken Mahler represents Lisbon on the Scenic Route 169 Advisory Committee. For more information on the plan, visit the Northeast Council of Government's web page, [www.neccog.org](http://www.neccog.org). Lisbon Fall Festival time is upon us once again! This year the festival's main events will be held on Friday and Saturday, September 16<sup>th</sup>-17<sup>th</sup>. The Lisbon Fall Festival has been growing in size and this year promises to be one of the best yet. That's right! We are kicking things off on Friday night!

### Fall Festival 2016

by Denise Howard

Friday night will start out with our famous chowder and fritters being served for your dinner from 4:30 – 7:00 PM. Grab some chowder and fritters to go or stay with us for a while for our first ever "open mic" night. Enjoy some of our local talent as they sing, make you laugh, or play an instrument, from 4:30-6:30.

For all of the 6<sup>th</sup>-8<sup>th</sup> grade kids at Lisbon Central School, there will be a dance at the Lisbon Community Center the night before the Fall Festival, Friday, September 17<sup>th</sup>, from 6:00 -9:00 PM, kicking off a weekend of fun.

Join us for the annual Lisbon Fall Festival on September 17<sup>th</sup>, 12PM-6PM. This event is being held at the Lisbon Community Center, near the Lisbon Meadows Park.

The day's events start at 10:00 AM with a 3.5 mile road race, starting at the Lisbon Town Hall and finishing in front of the Lisbon Community Center. Road Race applications are available at [www.lisbonfallfestival.org](http://www.lisbonfallfestival.org).

Chowder & Fritters, hamburgers, hot dogs and fries, popcorn, apple fritters, and refreshments will be available for

purchase. The members of the Newent Congregational Church normally have a great bake sale table of delectable treats at the Festival. We will have many fun events for young and older kids, including "Touch a Truck", as well as some great events, including dance, karate, and Broadway show demos.

We will also be expanding this year with over 35 local vendors, crafters, and artists. Meet the artists, crafters and vendors and do some early Christmas shopping.

We need YOUR help! As you know, we are a volunteer organization and are always looking for new volunteers on the committee, or for people who can spare just a small amount of time to help us with major events. We are asking for volunteers for set-up and tear down for the Fall Festival, as well as volunteers who can help cook or help with concessions. Contact Cyndy Goodwin Cockett at 860-710-1640 or [lastcarnival@comcast.net](mailto:lastcarnival@comcast.net) if you can assist with the Lisbon Fall Festival.

Stay in touch with the Lisbon Fall Festival and all of our future events by following us on Facebook! Visit <https://www.facebook.com/groups/lisboncommunitycenter/> and click on the Events tab!

The Lisbon Fall Festival Committee is raising the funds required to install a heating system in the Lisbon Community Center with events like the Fall Festival and Bingo. A heating system in the Community Center will make this spacious and affordable location available year-round for your events. To learn more about using the Lisbon Community Center, visit [www.lisbonfallfestival.org](http://www.lisbonfallfestival.org) and click on "Community Center". You may also make reservations by contacting Lorraine Dawley at 860-866-7595.

### National Flag Day is June 14<sup>th</sup>

(You can find the United States Flag Code at [wikipedia.org](http://wikipedia.org) )