



The Lisbon Quarterly

A Newsletter for Lisbon Residents



LISBON IS NOW A 2-DISTRICT VOTING TOWN

By Mary Grant, Republican Registrar and Ivy Mather, Democratic Registrar

The Town of Lisbon is now (and once again) a two (2) voting district town. Every voting household will be receiving a postcard advising them of the district in which they will be voting. Residents in **District 1** will be voting in the Town Hall, 1 Newent Road, and residents in **District 2** will be voting in the Senior Center, 11 Newent Road (the building between the school and the firehouse).

With the addition of a second polling place, more election workers are needed on election days. Please call 860-376-2708 or 860-376-2679 if you would like to be an election worker or for more information regarding what is involved with being an election worker.

Changes in the Town Clerk's Office

By Thomas Sparkman, First Selectman

If you have visited the Town Hall recently you have no doubt noticed some changes in the office of the Town Clerk. On January 6, 2011 we bid farewell to Betsy Barrett who has taken the position of City Clerk for the City of Norwich, and Assistant Town Clerk Ann Leffler, who after eighteen years of service to the residents of the community retired.

While we will miss their smiling faces behind the counter, we wish Ann much happiness in retirement and Betsy much success in her new position and thank them both for their many years of dedicated service to the Town of Lisbon. Also on that day we gathered together for the swearing in of

Laurie J. Tirochi as the Town Clerk and Marjorie D. Wakely as the Assistant Town Clerk.

Laurie, who along with her family has lived in Lisbon for the past six years, has worked in the community substituting in our schools. She has also clerked for several boards and commissions and on occasion has acted as Assistant to the First Selectman.

Marjorie D. Wakely who, with her family, has lived in the Town of Lisbon for the past twenty eight years. She was a member of the Board of Education for ten years, an election official here in town since 2008 and has served on other boards and committees since 1997. Their combined experience, enthusiasm and dedication will be an asset to the community they now serve and they are a welcome addition to the Town Hall staff.

A Farmers' Market for Lisbon

By Kim Magnu, Chair.

A Farmers' Market Committee was formed over the summer months to explore the viability of a Farmers' Market in Lisbon. The committee conducted surveys of residents to determine interest, polled potential participants and interviewed other market masters.

After carrying out the research, the committee determined that it would be feasible for the Town to host a farmers' market. The committee reported same to the Selectmen at which time a permanent committee to run the market was created. The committee members are Sharon Gabiga, Donna Harris, Elaine Joseph, Kim Magness, Kim Sperry, and John Magness as an Alternate

It is with pleasure to announce that the first market will be held on Thursday, June 28, 2012 from 3:30 p.m. until 6:30 p.m. and then each Thursday through early October on the grounds of the Lisbon Community Center (The Barn). The committee anticipates having a variety of vendors offering fresh, locally grown produce, eggs, meat, honey and dairy products as well as a variety of artisans selling quality hand-crafted items. Lisbon resident Donna Harris will be the Market Master.

Please plan to stop by the Farmers' Market and help support our local farmers and pick up some fresh Connecticut grown products for your family. If you would like information on becoming a vendor, you can reach us at lisbonfarmersmarket.com or call 860-376-3400, visit us on Facebook or by email: kim.magness@comast.net

In this issue:

Fall Festival Committee	2
LCS Soccer Student	2
Planning & Zoning Notes	2
Town Historian	3
LHS Notes	4
Volunteers Needed	4
Easter Egg Hunt	5
Red Sox vs Twins	6

Lisbon Community Center/Fall Festival Committee After the Winter Break

By Lee Szruba, Treasurer

After the winter break, the Lisbon Community Center/Fall Festival Committee picked up its schedule of monthly meetings under new leadership. At its Annual Meeting, the Committee elected Damon Wallace as President, Cyndi Cockett as Vice President, Sharon Jones and Ray Joly as Secretaries; Lee Szruba continues as Treasurer.

Plans for this year's Fall Festival activities are being formulated and activities are being developed. It is hoped the Guitar Hero contest will be able to be held this year. The hours of the Food Court will be expanded in order to offer lunch to the Road Race participants and their supporters. The Car Show was popular last year and it is expected to be repeated. As always, folks interested in either chairing a Festival event or assisting on the day of the event are invited to either attend a Committee meeting or contact one of the current members. Meetings are held the fourth Monday of each month (except December and January) at 7:15 p.m. in the Conference Room of the Lisbon Town Hall.

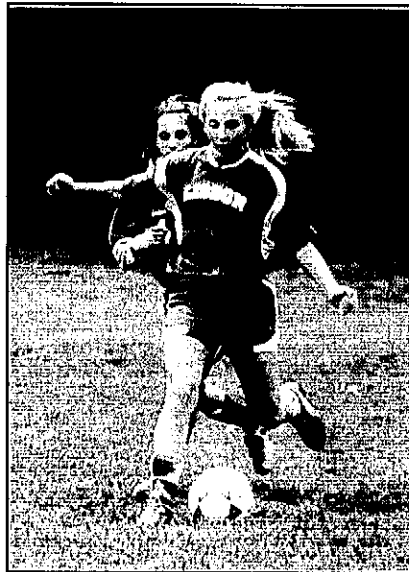
The Committee also oversees the use of the Community Center at Lisbon Meadows Park, also know as "the Barn". It is available for use by any Lisbon resident or organization headquartered in the Town from April 1st through October 31st. In lieu of a rental fee, there is a mandatory minimum \$50 contribution to the Community Center Heat Fund as well as a \$50 refundable deposit. The building has been, and may be, used for graduation, birthday and welcome home parties, yard sales, annual meetings, Boy and Girl Scout events, Daisy Scout sleep-overs, demonstrations, bridal and baby

showers, and even a wedding. The usage regulations and application are on the website lisbonfallfestival.org under Community Center. Reservations may be made by calling Lorraine Dawley at 860-886-7595.

Lisbon, CT to be represented in Sweden!

The Gothia Cup is the World Cup of soccer for youths. It takes place in Sweden, hosts over 1,500 soccer teams over a six day period, all competing for the title of best in the world. And Lisbon resident, Mae Phipps, has been selected to play!

Mae, 12, has been playing soccer for the Griswold Soccer Club since she was 5 years old. She started in recreational soccer and quickly moved to the Travel program, often playing up an age group, and even spent a short time in the Southeast Premiere League.



She is currently a 7th Grader at Lisbon Central School and helped captained her team this past fall. She is also currently a captain of the school basketball team,

plays U14 indoor soccer with GSC, a member of Service Learning Action People, serves as a student ambassador to the Lisbon Recreation Committee and is a high honors student. This spring she will be training with Team NOGA, a soccer program based in Fairfield, to prepare for the Gothia games. She is looking forward to meeting her teammates and representing Lisbon in Sweden this summer.

If you would like information on how you can support Mae's efforts, you may email Penny or Russ Phipps @therustypenny@comcast.net

Planning and Zoning Commission Quarterly Note

By Kim Sperry

The Commission has several special permit applications before it for review. Two applications from Ayoub Engineering, Inc., agent for McDonald's, seek to expand the drive through from 1 lane to 2, upgrade the building façade and to remodel the interior of the dining room and restroom areas ensuring full ADA compliance. Lisbon Industrial Park, LP has submitted an application for a Special Permit for a Construction and Demolition Recycling Facility located at 425 South Burnham Hwy. (Rt. 169). The 13.4 acre site is located on property owned by Philip C. Armetta and abuts the incinerator. Site excavation is estimated to take 2 years to complete before the facility is constructed. Public hearings for both McDonalds and the recycling facility are under continuation at this writing and open to the public. Applications and site plans are on file with the Town Clerk.

Benjamin Hull III and Ryan Donaldson were recently appointed and have taken the oath to become Planning

and Zoning Commissioners. The Planning and Zoning Commission has an alternate position vacancy that must be filled in accordance with Town Ordinance by a member of the town's Republican Party. The commission is made up of volunteers, whose duties include weighing the merits of a land use application, establishing zoning regulations, holding public hearings as required, preparing a plan of conservation and development every ten years, and establishing subdivision regulations, among others. Commissioners should be prepared to be familiar with the town's zoning and subdivision regulations and to attend regular meetings the 1st Tuesday of every month, special meetings as required, and public hearings. While challenging, the work in service to our community is rewarding. The town supports continuing education by funding seminars and conferences. Copies of zoning and subdivision regulations are distributed to all members and the town's professional planner is always available. A copy of *What's Legally Required* written by Michael Zizka, with Murtha Cullina LLP, our town counsel, details powers and duties of the commission, procedural and scheduling matters, conducting public hearings, decision making and conflict of interest issues. The book is available at the town hall for on-site review. The commission encourages any interested Republican to submit a letter of interest to the Planning and Zoning Commission, 1 Newent Road, Lisbon, Connecticut.

Early Communication

By Marcia Shafer, Town Historian

How do you communicate with your friends, family, and take care of your

business needs? Now, how would they have done it at the beginning of the existence of this country. The earliest means of getting and receiving personal and business information began with having correspondence sent by means of friends, merchants, and Native Americans to carry messages between the colonies.

In 1639 the first primitive postal service mail was held at coffee houses and taverns and you had to pick it up or leave your mail there for a person traveling in the direction that your "mail" was to travel.

In 1673 there came a monthly post between New York and Boston. A post rider trail developed and became known as Boston Post Road; today it is U.S. Highway 1. A post road was any road on which mail traveled. As roads developed stagecoaches became part of the delivery system.

Have you noticed the glassed in bulletin board near the back of the town hall building? It was used to post notices for the citizens of the town before all the methods of communication were in existence. Newspapers were a means of news but they didn't always list the local news-it was used more for the purpose of what was going on with the British Crown and obtaining freedom for the new founding country. Personal news traveled by way of family and friends and the grapevine. Births, deaths, and marriages were not published at that time.

Benjamin Franklin was designated the first Postmaster for the British Crown at the age of 31. In 1775 he was appointed the first Postmaster General of the United States of America by the Continental Congress which would eventually become the United States Postal Service in later years. He traveled the East Coast

documenting roads and paths to support the postal system delivery.

In 1823 any navigable waters became designated as post roads for carrying mail to its destination. Congress designated steamboats to carry mail on the waterways to a port on the river and it was dispersed from there to inland sites.

By 1832 the Morse code system was being developed as a means of sending messages to far reaches and by 1880 had connected the Eastern United States with the Western United States.

In 1838 the railroad system was a new means of mail transport and was authorized by Congress to be a means of delivering the mail. As it developed further, some of the trains sorted the mail in a car designated for the delivery of mail and it was then dropped off at their stations along the track system. In 1862 it became an official system for mail delivery.

The Pony Express developed in the Western United States in 1860 and became the most direct means of communication in the Western United States. The riders had special mail pouches that they removed from the horse they had just ridden and exchanged for a fresh horse at the next relay station where fresh horses were tended for the riders. This means of delivery lasted for 19 months and was then replaced by the Transcontinental telegraph system.

1866 to 1890 brought the Wells Fargo Company for secure mail and freight services. Free City delivery occurred in the major cities where you would have your mail delivered to your home. This was initiated in 1864 but it

took until 1896 to have rural free delivery by horseless Carriage. This was of course in the major cities. It was many years after this before Lisbon, a part of the Norwich postal system would have RFD service.

As air travel developed the postal system started using air mail to deliver mail by dropping pouches of mail out of the plane to specific areas and then was picked up by the local post office services. This is the communication systems used until the technological world developed.

If you have any information about the Lisbon communication means I would like to incorporate it into the next Quarterly newsletter. I know there was a small post office in Lisbon at Mesick's Garage but don't have much information about it. I would appreciate any information. You may contact me at 860-376-8108 or at lisoncthistorian@yahoo.com.

**Lisbon Historical Society
Quarterly Notes**

By Kim Sperry

Gardens throughout town are just beginning to hint at the spring to come. Daffodils are breaking through, the trees' bud covers look ready to burst just as tried winter greenery gracing front doors, and window boxes fade.

With the arrival of spring, we begin the annual cycle of planting and harvesting. During the early to mid 1800s, farmers plowed their fields using horse or oxen drawn walking plows. Traditionally, planting took place after the full moon in mid-May, which signaled the last frost of the season. May's full moon is called the

Full Flower Moon, Mother's Moon, Milk Moon, or Corn Planting Moon and marks a time of increasing fertility with temperatures warm enough for safely bearing young, a near end to late frosts, and plants in bloom.

First, a day was set aside for plowing. The next day was for dragging the field with a square frame of metal with large teeth in order to smooth the field and the third day was dedicated to planting.

In the early part of the century, wheat and other small grains were sown by hand. Corn was planted by drilling holes and placing three or four seeds in each hole, then covering them up. This last part – the actual planting – was a child's task, following an adult who drilled the hole.

By the early 1900's the Bradlaw family had taken up residence in the Bishop House. They continued the farming and gardening tradition by raising dairy cows, pigs and hay into the 1980s. Today, in addition to herbs and flowers, the Historical Society grows corn, scarlet runner beans, which attract hummingbirds, and squash, known as the "three sisters" garden, and sometimes, sunflowers. All are native to the Americas.

For the curious who notice the green lights in the Bishop House windows, we are participating in the month long Green Light Celebration. The celebration was developed as a way to build awareness and promote tourism in The Last Green Valley and to show support for the National Heritage Corridor. Please visit www.tlgv.org for information on how individuals and business can join in and for updates on programs and events.

Once again, thank you to everyone for the can and bottle donations. Our regular contributors know we have had to change the way we sort and redeem glass bottles and we finally have gotten the hang of the new system. It is extremely helpful and much appreciated that our contributors drop off their donations in the original boxes/packaging.

For information on Lisbon history and LHS events go to www.99main.com/~chill/Historic.html or our new Facebook page by typing Lisbon Historical Society in the "find friends" bar and check out videos on You Tube. We hope potential members are enticed by what they see, the Society meets on the second Friday of each month in the town hall, come join us.

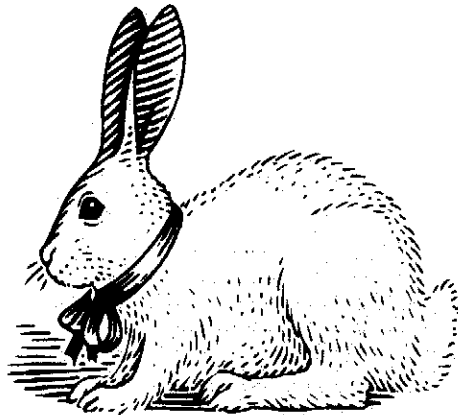
April 15th - 21st is National Volunteer Week. Thank you to all of the volunteers who make our community work so well.

To those who would like to get involved, please contact the Selectmen's office at 860-376-3400 or check out the town's web site: lisbonct.com for more contact information. There are openings on the Board of Finance, Conservation Commission, Planning and Zoning Commission, and Zoning Board of Appeals. We are also in need of volunteers to represent Lisbon on the Norwich Cable Advisory Council, the Southeastern Connecticut Water Advisory Board, and the Eastern Regional Mental Health Board.

Lisbon Resident

EASTER EGG HUNT

SPONSERED BY THE LISBON RECREATION COMMITTEE



SATURDAY MARCH 31, 2012

(Rain Date: Sunday, April 1st @ 10am)

AT

LISBON MEADOWS PARK

(NEAR THE PAVILLION)

HUNTING BEGINS PROMPTLY AT 10AM

EGG HUNT DIVISIONS:

AGES: 1-3, 4-6, AND 7-10



*Participants are encouraged to bring their own basket for collecting!

THE BOYS OF SUMMER ARE BACK!!!



**BOSTON RED SOX VS. MINNESOTA TWINS
BUS TRIP**

(Sponsored by the Lisbon Recreation Committee)

SUNDAY, August 5th, Time 1:35pm

Seats are in the Left Field Grandstand, Section 32 (Family Section)

Get your Tickets Early, First Come, First Served!!!

All tickets must be paid in full at time of reservation. Limited Tickets available!

Be aware this trip sells out FAST!!!!!!

Tickets are \$ 50.00/per person

(Tickets available to Lisbon Residents only through 7/13/12)

Motor Coach will leave Lisbon Meadows Park at 9:30am

and will arrive at Fenway Park at around 11:15 am.

The motor coach will leave 30 minutes after the final out.

Make Checks Payable to LISBON RECREATION

Please enclose the names and addresses of persons attending (required), Date of Trip and Contact number along with your check made out to Lisbon Rec. and mail to:

LISBON RECREATION COMMITTEE c/o LISBON TOWN HALL

RE: Red Sox Bus Trip

1 NEWENT ROAD – LISBON, CT 06351

ATTN: JAMES SYNOTT

Call: 860-822-1676 or Email JimSynott@comcast.net with questions