



The Lisbon Quarterly

A Newsletter for Lisbon Residents



33rd Annual Fall Festival

By Leonora Szruba

Mark your calendars for the 33rd annual Lisbon Fall Festival. The festivities will be kicked off with a youth dance on Friday, September 20th, for Lisbon Central School upper grade students. The dance, which has proved popular in the past, will be held in the Community Center.

Saturday's activities will begin with a pancake breakfast at the Lisbon Congregational Church served between 8 and 10 a.m. in the parish hall.

The well known and well attended road race will continue Saturday's activities. This race is also in its thirty-third year. The first twenty-five entrants will receive free t-shirts. Pre-race registration and sign in will take place in the Community Center and the race itself will kick off in front of the Town Hall at 10 a.m. Among the prizes will be special ones for the first Lisbon male and female runners crossing the finish line.

By the time the race ends and prizes are awarded, classic cars will be arriving for a car cruise in the Lisbon Meadows Park parking lot. The cars will be displayed by their proud owners from Noon until 3 p.m.

Also beginning at Noon the food court will be in operation, offering hotdogs, hamburgers, French fries and the ever popular clam chowder and fritters. Food will be served until 6:30 p.m., or until it runs out.

All during the day, various vendors will be on site in the Community Center parking lot, including some who appear at the weekly Lisbon Farmer's

Market. The talented bakers from the Newent Congregational Church will be hosting a bake sale for those wishing to have dessert after lunch or supper.

It is hoped enough volunteers can be recruited to resurrect a game area for the younger Festival goers.

Other activities will include the Lisbon Volunteer Fire Department's touch-a-truck and a display of some of their other fire-fighting and life-saving equipment. The Department's ambulance crew provides an escort for the road race. A request has been made to have the Connecticut State Police "convincer" on hand to safely demonstrate the effects of a motor vehicle crash. The Bishop House museum will be open for tours and demonstrations, including hearth cooking.

Another date to keep in mind is the Fall Festival bingo which, this year, will be held on Friday, October 4th, in the Community Center. Doors will open and paper sales will start at 6 p.m., with the games slated to start at 7.

Profits realized from the Lisbon Fall Festival/Community Center Committee sponsored activities go toward maintenance of the Community Center. Any excess income goes into the Community Center Heat Fund which will be used to insulate the interior of the building and install a heating system so the Center can be used year round. The current Heat Fund balance stands at just over \$13,000 and it is anticipated about four times that amount will be needed. The Committee's plan is to complete the project without using any tax money.

So please join us in hoping for good weather and the opportunity to see and greet your neighbors and fellow townspeople at this annual event.

Board of Assessment Appeals

Motor Vehicles

All owners of motor vehicles registered in the Town of Lisbon are hereby warned that the Board of Assessment Appeals will meet in open session Thursday September 12, 2013 at the Lisbon Town Hall, at 6:00pm for the sole purpose of hearing appeals related to the assessment of motor vehicles.

All persons claiming to be aggrieved by the doings of the Assessor of the Town of Lisbon with regard to motor vehicles' assessment on the Grand List of October 1, 2012 are hereby warned to make their appeal to the Board of Assessment Appeals at this meeting.

Persons wishing such a hearing **ARE ADVISED TO OBTAIN A FORM AND AN APPOINTMENT** by calling the Assessor's office at 860-376-5115 between the hours of 9:00am and 3:00pm Monday thru Thursday or 9:00am until 1:00pm on Friday.

Please bring with you at the time of your scheduled hearing documentation to support your appeal.

Kimberly Lang, Chairman
Zoning Board of Appeals

**Connecticut Department of Energy
and Environmental Protection**

**Go to deepstore.com for maps, hiking
& biking trail guides, boating &
kayaking guides, park passes, etc.**



33rd Annual
LISBON FALL FESTIVAL ROAD RACE
SATURDAY – SEPTEMBER 21, 2013



RACE STARTS IN FRONT OF THE TOWN HALL; FINISHES IN FRONT OF THE COMMUNITY CENTER

Course: 3.2 miles (Route 169 – Mell Road – Ames Road – Route 169)

Start Time: 10:00AM, Meet Community Center.

Entries: \$10.00 Registering before the day of the race, non-refundable
 \$15.00 Registering the day of the race.

T-shirts: For the first 25 entries

Awards: 1st Place Overall Winner – Male & Female

To Enter: **Make checks Payable to:** Lisbon Fall Festival
and Mail to: Lisbon Fall Festival
 c/o Ellen Joly
 18 Ross Hill Road Ext.
 Lisbon, CT 06351
 Tel. # (860) 376-4381, edjoly01@snet.net, www.LisbonFallFestival.org

OFFICIAL APPLICATION – ALL INFORMATION MUST BE COMPLETE

PLEASE PRINT! (check one): **SHIRT SIZE:** S M L XL XXL

LAST NAME _____ FIRST NAME _____

MALE _____ FEMALE _____ E-MAIL ADDRESS _____

STREET _____ CITY/TOWN _____

STATE/ZIP _____ PHONE NUMBER _____

DATE OF BIRTH _____ AGE – DAY OF RACE _____

CHECK ONE OF THE FOLLOWING:

- | | |
|---|--|
| <input type="checkbox"/> JUNIOR OPEN 13 & UNDER | <input type="checkbox"/> MASTER 40 – 49 |
| <input type="checkbox"/> HIGH SCHOOL 14 – 18 | <input type="checkbox"/> SENIOR 50 – 59 |
| <input type="checkbox"/> OPEN 19 – 29 | <input type="checkbox"/> SUPER SENIOR..... 60 – 69 |
| <input type="checkbox"/> SUBMASTER 30 – 39 | <input type="checkbox"/> CLASSIC 70 & OVER |

I hereby release the Town of Lisbon, Lisbon Fall Festival Committee and any other person(s) or organization(s) connected with this race from any claim of damage or injury from my participation in or traveling to and from the Lisbon Road Race on Saturday, September ??, 2009. I also give my permission to use my likeness and publish my name in the news media. Race numbers are non-transferable and the Race Committee reserves the right to offer or reject entries. I have read and understand the above.

SIGNATURE _____

PARENT'S SIGNATURE (IF UNDER 18) _____

FOR OFFICIAL USE ONLY

ENTRY NO _____

RACE NO _____

Lisbon Farmers Market

By Elaine Joseph

The Lisbon Farmers Market is half way through its second season, and going well. A steady stream of visitors come to Lisbon meadows Park every Thursday from 3:30 - 6:30 to pursue and buy from our friendly, hard working vendors. You will find heirloom and organic produce, fruits, vegetables, meats, dairy, and baked goods; quality handcrafted soaps, bug balm, sachets and other home-crafted goodies; delicious jams, breads, popcorn and maple syrup. All of these wonderful CT Grown products - and the happy chit-chat of vendors and visitors - gives our market its local flavor! Special events such as our **Harvest Fest on September 19th** and **Walktober on October 3rd** will add some special vendors and activities, too. Be sure to visit our website www.lisbonfarmersmarket.com to learn the "who, what and where" of your community's growing Farmers Market!

Burnham Tavern Tour contd.

By Marcia Shafer, Town Historian

This article is a continuation of the tour of the George Hoydila aka Burnham Tavern in the last newsletter. We left off on the first floor in the back of the house/tavern. The fireplace on the south wall is closed-in with bricks and is painted white of which there are many layers. The flue for the propane stove located in front of the fireplace goes into the wood paneling above the fireplace mantle. This fireplace appears to have been the main cooking hearth as it is the largest in the house. It has a large hearthstone that has been painted a brick red color. There are layers of paint on the blocked-in fireplace which is peeling or cracking off the stones.

To the far left, on the northwest side of the kitchen, there is a door opening into a small room. There is a vertical

feather board wall and the two panel door is hinged on with H L hinges and the same kind of thumb latch as previously described. The feather boards in the kitchen are painted a green color and on the opposite side, in the small room, they are painted white and the door is white. The other walls of the small room are wall papered. The room is decorated as if it were meant for a woman; the wall paper is a floral striped pattern. The three windows appear to be original; the two on the north wall and the one on the west wall are the nine over six pattern. The windows in this room survived the Hurricane of 1938. The floor has a floor cover of colorful flowers and is a solid one-piece cover. I am not sure how old it is but it covers most of the floor with just a painted border on the floor boards. This room does not have a heat source in it but does have a hole in the upper wall, near the door into the next room, as though there might have been a stove in there at one time.

Moving to the south wall there is a door leading into the front left room. When you go through the door, you will see two windows facing the highway and one window on the west wall all of which are the two over two pattern. These windows did not survive the Hurricane of 1938. The door into this room has a doorknob instead of the thumb latch system. When I toured the house there was a Wilcox and White Victorian organ on the north wall of this room. It has since been removed. The east wall has the raised paneling along the entire length and height of the room. It has a narrow mantle over the Rumford fireplace which is painted red. At some point in time the bricks were extended beyond the woodwork so that they stick out onto the hearth about 8 to 10 inches beyond the lintel. The design of the woodwork over the fireplace is ornate with a special design centered at the top of the wood paneling over the hearthstone.

The wood paneling, from that room, extends over the door that exits into the

front center hallway. The door has two long panels on the top half, two small rectangular pieces in the center and has triangle raised panels on the bottom with a board separating the triangles. The door was difficult to shut due to the bowed floor boards under it. It has H L hinges which appear to have some rose head nails with small pieces of leather under them to hold the nails in place. This room has a Victorian floral panel with a grayish background.

The floor boards are painted a brown around the board with the same floor cover on the floor as the one in the back room, only larger due to the size of the room. When you exit this room, you are back in the front hallway of this center chimney home.

If you return to the back of the house, on the first floor through the "kitchen", you will go out what would have been the back door to the house. In this corner area you will see three doors going into the staircase and a door into the small pantry room. The door into the pantry room has a pintle and strap hinge system and a thumb latch on the door. The pantry is a small room with a tiny window on the north wall and a medium size window on the east wall. It has shelves to store food, cooking utensils and whatever else might have been needed for the kitchen.

The porch is non-descript and has cement stairs outside with 1946 etched into the cement. This leads me to believe it was added on in 1946. The porch had no heat and was used to store food and baked goods. It is painted a light lavender color has a bead board ceiling, and one window. The wall has horizontal boards. It will be interesting to determine if that was the outside wall of the house and the porch was attached to it.

If you have any information to share, please contact me via the internet at lisboncthistorian@yahoo.com

LHS Quarterly Notes

By Kim Sperry

As summer wanes, the John Bishop House gardens are reaching their peak. Although it took several applications of cayenne pepper and a quickly installed fence to get the plants beyond the reach of the resident woodchuck, the herb garden on the south lawn and the three sisters' garden behind the picket fence owe their natural beauty to July's heat, August rains and a whole lot of manure. Both are period gardens designed to reflect the history of the John Bishop House and many of the plants and seeds are heirloom varieties. The herbs are used in our hearth cooking and the tall corn, scarlet runner beans and squash, which are for the viewing pleasure of passing motorists, joggers and everyone who stops at the can and bottle bins, will find their way into the kitchen as well. We hope you have enjoyed the gardens as much as we have.

Upcoming events this fall are Lisbon's annual Fall Festival on Saturday, September 21. The John Bishop House will be open for hearth cooking demonstrations, a bake sale fund-raiser, research and just plain fun. Additionally, a newly recreated space will be open for viewing. Last spring, Lisbon Central School 8th grader Danielle Tirocchi, proposed a project with the goal of achieving the Girl Scout Silver Award, which is the second highest award of the Girl Scouts of the USA. Her project is to recreate a child's bedroom circa 1810 in the John Bishop House. After thorough research, she removed wallpaper, cleaned, painted, and restaged a tiny second floor bedroom. Congratulations to Danielle for all of her hard work, her interest in historic preservation

and spirit of volunteering.

The Last Green Valley's Walktober calendar is now available at www.tlgv.org web page. The Lisbon Historical Society is sponsoring a bus to Anshei Israel Synagogue, the smallest remaining synagogue in Connecticut. The synagogue is on the National Register of Historic Places as an extraordinary example of a small country place of worship. A short ride will take visitors to a walk along a section of the old Worcester stagecoach line and then a visit to the Burnham Tavern. The tour will conclude at the 1810 Bishop House Museum. Please call 860-887-0776 after 6:00 p.m. to register.

Speaking of the Burnham Tavern, LHS member, Laurie Pasteryak Lamarre has taken the lead in writing the application to list the Tavern on the National Register of Historic Places. Property records dated from the 1700's, showed the property having been owned by Perkins, Burnham, Bishops, several other related families and the house was last lived in by George Hoydila. Henry F. Bishop, in his "Historical Sketch of Lisbon, CT 1786 - 1900" writes: Captain Burnham's Inn "This old stage tavern or inn, was kept for a long time by Capt. Benj. Burnham, who built the present house on an old tavern site. It was kept later by Capt. Reuben Bishop, father of the author, whose boyhood days were spent there; it was a tavern where the stage line between Boston and New York changed its horses. It was, at the time of the cholera scare in '32 and '33, a busy place where daily, three stages in each direction drew up their foaming, panting horses upon the front green where the post-horn's mellow tones having heralded their arrival." As the Education Coordinator for the Lebanon Historical Society, Laurie is well

qualified to take on the task of writing the application for this property.

Holiday Open House and Winter Cooking Classes are yet to be scheduled. Tune into www.99main.com/~chil/Hisotric.html, or *Facebook* page by typing Lisbon Historical Society in the "find friends" bar for information, schedule and registration forms. You can also watch a couple of cooking class clips on YouTube.

Thanks once again to everyone who donates their cans and bottles and the boxes to put them in. Every nickle counts.

Walktober 2013, Lisbon's Historic Tour 10/13/13

At 9:30 a.m. on October 13, 2013, board a bus at the Senior Center parking lot to go to the Anshei Israel Synagogue, the smallest remaining synagogue in Connecticut and on the National Register of Historic Places as an extraordinary example of a small country place of worship. A short ride will take visitors to a walk along a section of the old Worcester stagecoach line and then a visit to a historic inn and tavern. Walkers will conclude their tour at the 1810 Bishop House Museum, an example of an early gentleman's farm house. 3 hours, 1 mile. **Please call 860-887-0776 after 6:00 p.m. to register. Sponsored by the Lisbon Historical Society.**

START A NEW TRADITION....
THE MACY'S THANKSGIVING DAY PARADE BUS TRIP
(Sponsored by the Lisbon Recreation Committee)



THURSDAY, NOVEMBER 28, 2013

Take the Whole Family!!!!

Get your Tickets Early, First Come, First Served!!!

Tickets are \$ 30.00/per person

(Tickets available to Lisbon Residents only through 11/02/2013)

The Motor Coach will leave Lisbon Meadows Park at 4:30am (promptly) and arrive in the city at around 7am. We will view the parade near Central Park where it begins at 9 A.M. The motor coach will leave 30 minutes after the end of the parade so we can be back in Lisbon in Time for Thanksgiving dinner (approximately 2-3 pm)

Make Checks Payable to LISBON RECREATION.

Please enclose the names and addresses of persons attending (required) and Contact number along with your check made out to Lisbon Rec. and mail to:

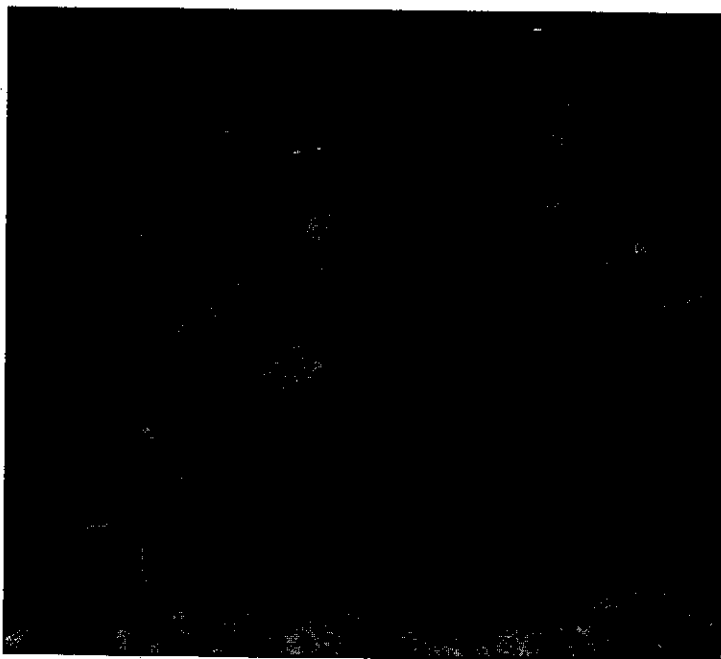
LISBON RECREATION COMMITTEE
c/o LISBON TOWN HALL
RE: MACY's Parade Bus Trip 2011
1 NEWENT ROAD – LISBON, CT 06351

Call: 860-822-1676 or Email JimSynott@Comcast.net with questions

Got Leftover Paint?

The problem of how to properly dispose of your old, unwanted household paint just got a lot easier. As of July 1, a new program has begun, to collect and recycle unwanted latex and oil-based paint. This program is the result of a law passed in 2011 requiring paint manufacturers to manage unwanted paint.

Connecticut's paint recycling program utilizes a network of retail stores, transfer stations and household hazardous waste collections as drop-off points for residents to take unwanted paint. The organization coordinating the program is called PaintCare. Their website, www.paintcare.org allows residents to type in their town or zip code to find a nearby drop-off point.



Does this remind you of your garage or basement?

The Department of Energy and Environmental Protection (DEEP) estimates there are more than 5 million containers of unwanted paint from homeowners in Connecticut waiting to be disposed of properly. Under this new program, unwanted paint will be collected and the latex will be recycled if possible. The oil-based paint will be burned for energy recovery.

The program is financed by a fee at the point of sale. Customers pay 75 cents on a gallon container and \$1.60 on five-gallon containers. This money goes to the paint manufacturers, who use it to pay for collection and processing the unwanted paint. Previously, managing unwanted paint was funded primarily by municipalities through property taxes. Financing the recycling of a product through the purchase price of that product instead of municipal tax dollars is an example of extended producer responsibility (EPR). This approach is already in place for electronics, and legislation passed this year will establish a similar program for mattresses.

For more information, visit DEEP's Paint Recycling webpage — www.ct.gov/recycle.