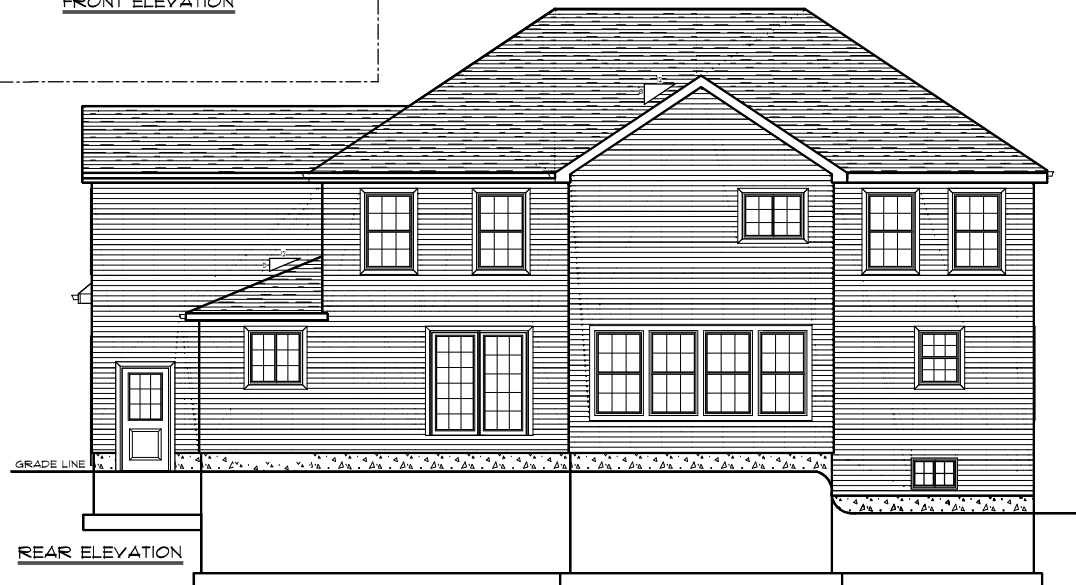
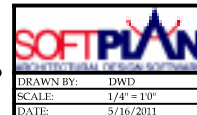


COPY PROTECTED  
Property of  
ERIK'S DESIGN-BUILD  
ASSOCIATES, INC.  
NO UNAUTHORIZED REPRODUCTION  
WITHOUT WRITTEN PERMISSION  
1-800-339-4961

Erik's Design-Build strictly follows the code development process of the 2003 International Residential Code for one and two-family dwelling with the state of CT, supplement in accordance with American Forest and Paper Association (AF&PA) Wood Frame Construction Manual for One-and Two Family Dwellings (WFCM)



ERIK'S DESIGN-BUILD ASSOCIATES, INC.



RICHTER RESIDENCE

643 WEST ROAD SALEM, CT

FRONT AND REAR  
ELEVATIONS

PAGE #:  
1

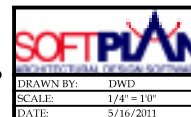
DRAWN BY: DWD  
SCALE: 1/4" = 10"  
DATE: 5/16/2011

COPY PROTECTED  
Property of  
ERIK'S DESIGN-BUILD  
ASSOCIATES, INC.  
NO UNAUTHORIZED REPRODUCTION  
WITHOUT WRITTEN PERMISSION  
1-800-339-4961

Erik's Design-Build strictly follows the code development process of the 2003 International Residential Code for one and two-family dwelling with the state of CT, supplement in accordance with American Forest and Paper Association (AFPA) Wood Frame Construction Manual for One-and Two Family Dwellings (WFCM)



ERIK'S DESIGN-BUILD ASSOCIATES, INC.



RICHTER RESIDENCE

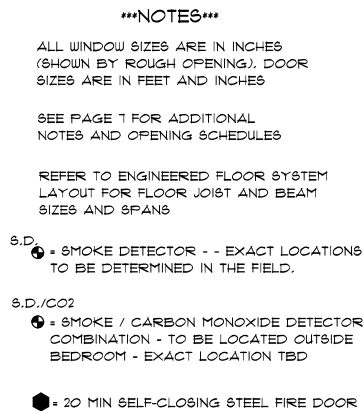
643 WEST ROAD SALEM, CT

SIDE ELEVATIONS

PAGE #:  
2

DRAWN BY: DWD  
SCALE: 1/4" = 10"  
DATE: 5/16/2011

Erik's Design-Build strictly follows the code development process of the 2003 International Residential Code for one and two-family dwelling with the state of CT, supplement in accordance with American Forest and Paper Association (AFPA) Wood Frame Construction Manual for One-and Two Family Dwellings (WFCM).



\*\*\*ALL FINAL DIMENSIONS AND UTILITY  
LOCATIONS TO BE FIELD VERIFIED\*\*\*

COPY PROTECTED  
Property of  
ERIK'S DESIGN-BUILD  
ASSOCIATES, INC.  
NO UNAUTHORIZED REPRODUCTION  
WITHOUT WRITTEN PERMISSION  
1-800-338-4367

ERIK'S DESIGN-BUILD ASSOCIATES, INC.

**SOFTPLAN**  
ARCHITECTURAL SOFTWARE

DRAWN BY:	DWD
SCALE:	1/4" = 1'-0"
DATE:	5/16/2011

## RICHTER RESIDENCE

643 WEST ROAD SALEM, CT

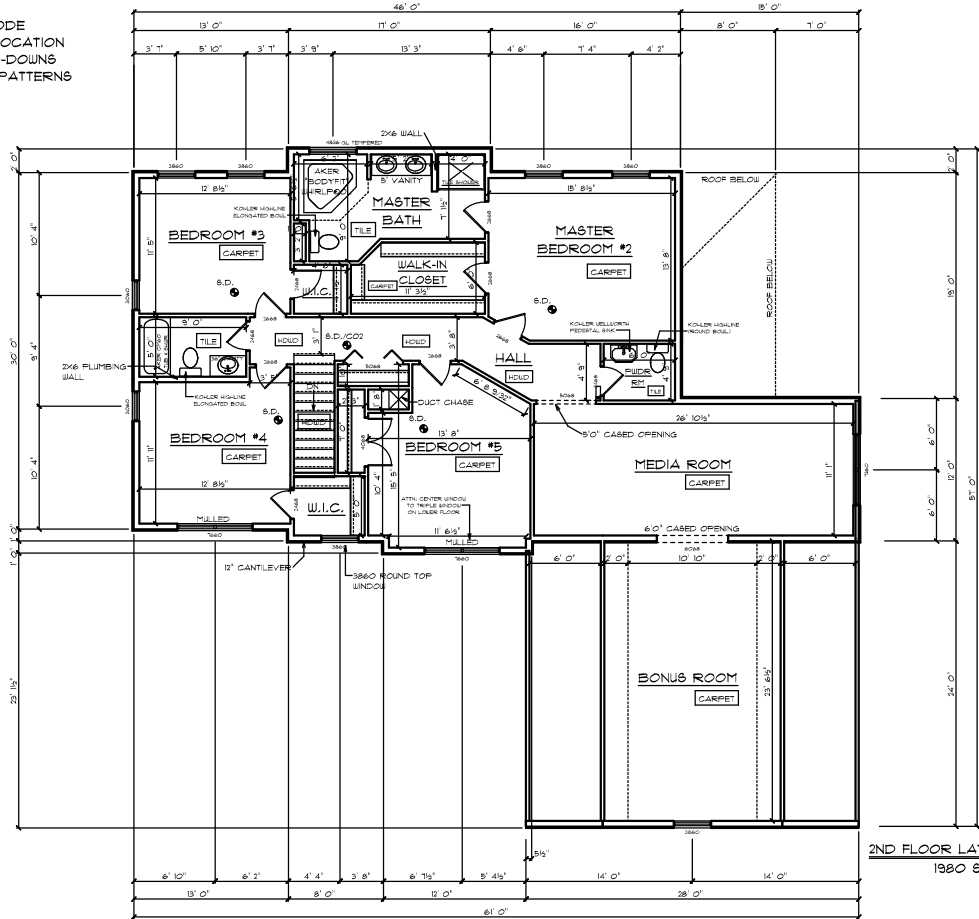
### FIRST FLOOR LAYOUT

PAGE #:

3

\*\*\*NOTE\*\*\*  
 REFER TO WIND CODE  
 ANALYSIS PLANS FOR LOCATION  
 OF SHEARWALLS, HOLD-DOWNS  
 AND REQUIRED NAILING PATTERNS

Erik's Design-Build strictly follows the code development  
 process of the 2003 International Residential Code for  
 one and two-family dwelling with the state of CT, supplement  
 in accordance with American Forest and Paper Association  
 (AF&PA) Wood Frame Construction Manual for One-and Two  
 Family Dwellings (WFCM)



\*\*\*NOTES\*\*\*

ALL WINDOW SIZES ARE IN INCHES  
 (SHOWN BY ROUGH OPENING). DOOR  
 SIZES ARE IN FEET AND INCHES

SEE PAGE 1 FOR ADDITIONAL  
 NOTES AND OPENING SCHEDULES

REFER TO ENGINEERED FLOOR SYSTEM  
 LAYOUT FOR FLOOR JOIST AND BEAM  
 SIZES AND SPANS

- S.D.  
 ● = SMOKE DETECTOR - - EXACT LOCATIONS  
 TO BE DETERMINED IN THE FIELD.
- S.D./CO2  
 ● = SMOKE / CARBON MONOXIDE DETECTOR  
 TO BE INSTALLED OUTSIDE SLEEPING AREAS  
 EXACT LOCATION TO BE DETERMINED IN FIELD

2ND FLOOR LAYOUT  
 1980 SQ.FT.

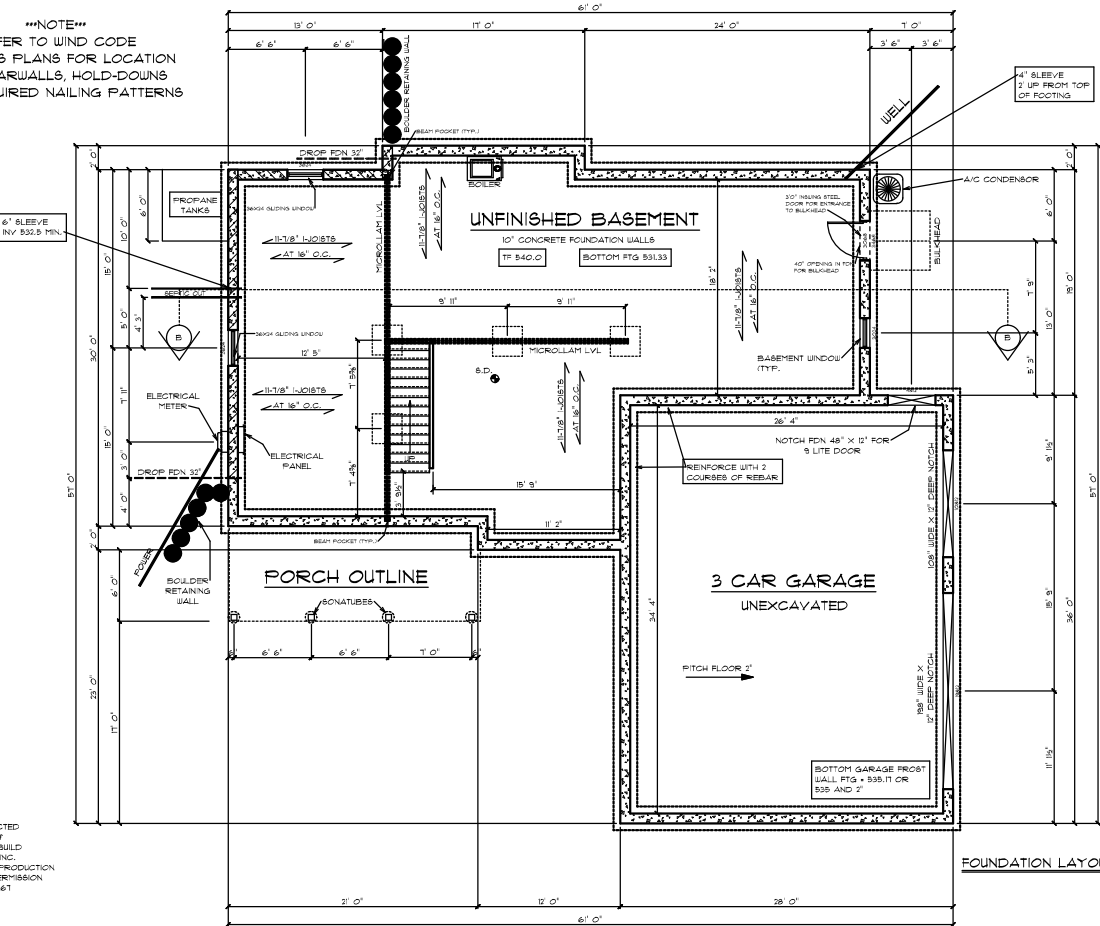
\*\*\*ALL FINAL DIMENSIONS AND UTILITY  
 LOCATIONS TO BE FIELD VERIFIED\*\*\*

COPY PROTECTED  
 Property of  
 ERIK'S DESIGN-BUILD  
 ASSOCIATES, INC.  
 NO UNAUTHORIZED REPRODUCTION  
 WITHOUT WRITTEN PERMISSION  
 1-800-339-4361

ERIK'S DESIGN-BUILD ASSOCIATES, INC.

	RICHTER RESIDENCE	
	643 WEST ROAD SALEM, CT	
	DRAWN BY: DWB SCALE: 1/4" = 1'-0" DATE: 5/16/2011	SECOND FLOOR LAYOUT PAGE #: 4

\*\*\*NOTE\*\*\*  
 REFER TO WIND CODE  
 ANALYSIS PLANS FOR LOCATION  
 OF SHEARWALLS, HOLD-DOWNS  
 AND REQUIRED NAILING PATTERNS



Erik's Design-Build strictly follows the code development process of the 2003 International Residential Code for one and two-family dwelling with the state of CT, supplement in accordance with American Forest and Paper Association (AF&PA) Wood Frame Construction Manual for One and Two Family Dwellings (WFCM)

\*\*\*NOTES\*\*\*

- ALL UTILITY LOCATIONS SHOWN ARE FOR REFERENCE ONLY. REFER TO SITE PLAN FOR EXACT UTILITY LOCATIONS
- ALL FINAL DIMENSIONS AND UTILITY LOCATIONS ARE TO BE FIELD VERIFIED
- REFER TO ENGINEERED FLOOR DESIGN FOR EXACT BEAM, COLUMN AND JOIST LOCATIONS
- REFER TO PAGE 1 FOR ADDITIONAL NOTES AND OPENING SCHEDULES
- = SMOKE DETECTOR - EXACT LOCATION TO BE DETERMINED IN THE FIELD AND ADHERE TO CODE
- ▨ = WOOD FRAMED WALL ON DROPPED FDN

COPY PROTECTED  
 Property of  
 ERIK'S DESIGN-BUILD  
 ASSOCIATES, INC.  
 NO UNAUTHORIZED REPRODUCTION  
 WITHOUT WRITTEN PERMISSION  
 1-800-335-4961

ERIK'S DESIGN-BUILD ASSOCIATES, INC.

<b>SOFTPLAN</b>		RICHTER RESIDENCE	
DRAWN BY: DWB		643 WEST ROAD SALEM, CT	
SCALE: 1/4" = 1'-0"		FOUNDATION LAYOUT	
DATE: 5/16/2011		PAGE # 5	