

Volume 91

Fall 2015

Number 1



PRESIDENT'S MESSAGE

As I write this note the temperatures hover in the high 80's but it is time to welcome you to the routines of autumn. I look forward to working with you again this year and ask you to join our state affiliate of AAFCS in our work for the 2015 - 2016 year.

The Board of the CT affiliate has developed a Mission for the coming year. Its basic tenets are to:

1. Provide Professional Development programs for our constituents
2. Promote FCS education at the collegiate level

Early this fall you will be asked to provide mailing and email addresses for FCS personnel in your school district. This will allow Lee Marcoux at the SDE and your CT affiliate of AAFCS to communicate with all FCS professionals easily. At the moment both the SDE email list and our affiliate mailing addresses are dated.

Once again we will be providing Professional Development opportunities. We will host the Victorian Lady on October 17th at Rocky Hill High School. More information regarding this event is included in the newsletter.

As the year progresses we hope to visit the UConn regional campuses to meet with potential FCS educators. If we don't promote our programs - no one else will.

As you can see there are a host of opportunities for you to be involved. Our future as a profession depends on you. Please join us!


Becky Person
AAFCS/CT Affiliate President

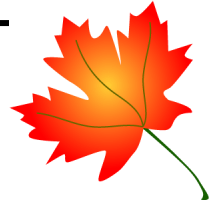
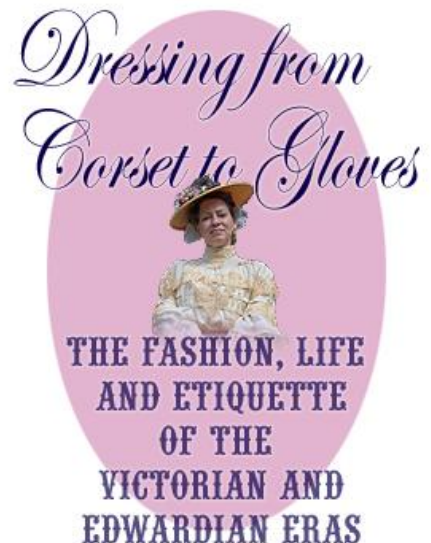


Downton Abbey Tea

October 17, 2015
11:00 am – 1:30 pm
Rocky Hill High School

Pre-sale tickets for **\$35.00** includes the performance and a light afternoon tea served with sandwiches, scones and desserts. Registration form included in this newsletter.

For more information:
Contact Karen Redanz
redanzk@rockyhillps.com
kredanz94@gmail.com



MEMBERSHIP MINUTES

Identify with the “big picture” It unites and sets you apart!

There **is** strength in numbers. Teams, groups and organizations rally around a cause with conviction to bring an issue to a positive resolve. Often, the concern takes a left or right turn only to be revisited with perhaps additional pieces of concern to consider.

AAFCS is somewhat like the above picture. I call the scene a “big picture” view, as I am a fan of seeing the whole before viewing the segmented parts. A good look-see at *your* National organization clearly shows the wide perspective of a committed, encompassing and professional group. The vision, core values and mission of AAFCS are prominently displayed on the site’s home page. Take a look and take in the picture!

The strategic plan includes three priorities:

- *Advocacy and collaboration
- *Education and recognition
- *Research and innovation

The plan screams all-inclusive, “big picture” and directed toward the optimal quality of life for the individual throughout the lifespan.

Make no mistake---- AAFCS is *your* professional organization. Can you afford not to see the “big picture”? Review the web site at AAFCS.org. The links, side bars and easy to read format make it simple to see where you fit. Much, much growth has come from the community arrangement. Members are from all walks of professional life and contribute to the groundwork of AAFCS via its vision, core values and mission. If you haven’t signed on with a community or two give it some thought. All are made up of like-minded professionals who share a common purpose.

Another site you should avail yourself to regularly is our affiliate site ctaafcs.org. It is updated frequently so that one can keep abreast of events scheduled right here in Connecticut. There are links to the affiliate newsletter, forms to order items, etc. Do make the site a regular stop!

Finally, the Connecticut membership number remains at 109. The list includes professionals in industry, college educators, teachers and retirees. Our affiliate board is comprised of working and retired professionals who work throughout the year planning regional meetings, mentoring those who are considering entering the FCS area and keeping a hand in National projects.

Is *your* profession important to you? As a professional how can you say no! Continue with your membership at renewal time, encourage others in your workplace to join our forward moving efforts in AAFCS and stay current with the “big picture” of *your* National organization.

Stephanie Fians, *Membership Chair*

Karen Redanz

2015 AAFCS National Teacher of the Year
Merit Finalist

The Sustainable Table



AAFCS/CT Presents
A Downton Abbey Tea
Featuring: **Kandie Carle the Victorian Lady**
October 17, 2015
11:00 am – 1:30 pm
Rocky Hill High School

Kandie Carle has been working in the theatre since 1980 as an actress, dancer and singer throughout the US and abroad. Ms. Carle created this one-woman show in 1996. She has shared her passion for history with audiences at venues throughout the country. The presentation is not a fashion show; rather, Ms. Carle takes her audience on a journey of discovery by using clothing and accessories as a tool. She dresses in layer upon layer of the clothing of the chosen period and as each piece is added, she explains how it was worn, as well as when and where it was appropriate. Throughout the presentation she shares insights into the clothing, lifestyle, manners, etiquette and customs of men, women and children. Included are interesting anecdotes and 'myth busting' facts. The performance is full of audience interaction.

Ticket (pre-sale only) for \$35.00 includes Edwardian Performance by Kandi Carle

Followed by a light afternoon tea served with sandwiches, scones and desserts.

Bring Your Own Tea Cup.

Prizes awarded to Best Hat and Best Dressed!

All proceeds to benefit AAFCS Scholarship fund.

Please Send Registration Form and Payment to:

Karen Redanz

68 Mountain View Drive

Norwich, CT 06360

For additional questions email: redanzk@rockyhillps.com or kredanz94@gmail.com

AAFCS/CT HIGH SCHOOL SCHOLARSHIP RECIPIENT



Belle Garafola Sean Dolan Carole Christensen

The 2015 Family and Consumer Sciences of Connecticut high school scholarship recipient is Sean Dolan of Pomperaug High School in Southbury, Connecticut. Sean has participated in a number of activities in high school including tennis, French Honor Society, National Honor Society and as a host for foreign exchange students.

One course he enrolled in was an Independent Foods Course entitled "Dough Analytics" where he is testing the variables that affect doughs. He has previously taken other culinary courses.

Sean plans to major in Food Science at Cornell University. Good luck, Sean!

IN THIS ISSUE

- ❖ PRESIDENT'S MESSAGE
- ❖ DOWNTON TEA EVENT
- ❖ MEMBERSHIP MINUTES

- ❖ WHERE DO I FIND ITEMS ON THE WEBSITE?
 - ❖ RECOGNITION
 - 2016 TEACHER OF THE YEAR
 - PROFESSIONAL OF THE YEAR
 - STUDENT SCHOLARSHIP

Where do I find items on the website?	Location	Due Date
➤ Fall 2015 Newsletter	Links Tab	-
➤ <i>Registration Form for Downton Tea 10.17.15</i>	<i>Conferences Tab</i>	See registration form
➤ Student Scholarship Application	Scholarship Tab	March 15
➤ Teacher of the Year Application/Nomination	Awards Tab	March 15
➤ Professional of the Year Application/Nomination Form	Awards Tab	April 15
➤ Professional Development Application	Awards Tab	April 15
➤ Contact Information for Connecticut Affiliate Officers	Contact Tab	-



CONNECTICUT AFFILIATE

44 George Drive
Vernon, CT 06066

www.ctaafcs.org
www.aafcs.org

This newsletter is one of your membership benefits!

New Item to support the Scholarship Fund

A new was unveiled at the spring meeting this May. Our Affiliate continues to provide a graduating senior with a \$1000.00 scholarship for continuing their education in an FCS related field of study. We have note cards with the modern Betty Lamp and a variety of jewelry items consisting of the traditional lamp and modern lamp. The newest item is a red apron with a modern white lamp logo. Karen Rendanz is one of the top 3 finalist for Teacher of the Year recognition at the National AAFCS meeting in June. Karen's curriculum focuses on The Sustainable Table. Karen had the aprons on sale as she presented her curriculum at the show case session. The aprons were available for sale to our spring meeting attendees at the cost of \$15.00.



The Betty Lamp symbol has been used as a symbol for learning for several centuries. The beam of the lamp has been quoted to represent the following characteristics: knowledge, strength, achievement, the appreciation of beauty and the bond of cooperation. Our affiliate has presented the current president of AAFCS with a traditional pin for many years at the national meeting. The Smithsonian Institute in Washington, DC has placed a traditional pin in the archives of the Ellen Richard Swallow collection.

Contact Barbara Morris for more information at morris_barbed@yahoo.com

Barbara Morris and Stephanie Fians

National Conference 2015 Summary **by Barbara Morris (delegate for CT)**

This year the conference was in Jacksonville, FL. The first session I got to attend was the Leadership Council. The full day session was focused on strategic priorities which are about providing leadership & support to those who assist individuals, families, & communities in making informed decisions about their well-being, relationships, and resources to achieve optimal quality of life. There are 3 priorities:

- Advocacy & Collaboration
- Education and Recognition
- Research and Innovation

To learn more go to the aafcs.org website and investigate "news".

The next day the keynote speaker, Eric Sheninger, gave thoughts related to the conference theme "Advancing the Field with New Technology". He had much to share about today's society and the use of electronic devices and ways those devices are changing our thought process. Our environment (society & family units/households) is evolving from decades past.

Speaking of digital technology, more info is available on the web if you search the keynote speaker's name or the title of his presentation "Creating Schools That Work for Kids" The last full day I was in a session about filling the educator pipeline. As a profession we all need to advocate and collaborate to increase awareness, stay strong and thrive going forward. If you're already reaching out keep going, if you're looking to do this there are many possibilities. The conference closed with a luncheon to send us off reminded to carry ideas & enthusiasm back to our local area, and finally an invite to return in 2016 to Bellevue, Washington

National Conference held in Jacksonville Florida June 2015 by Anita Ferron, AAFCS/CT IFHE

This year the conference was held in Sunny Florida along the river walk. I went on a preconference tour of the Interior Trading Company where we had an inside look at a whole sale retailer for the interior design industry. What a fabulous day one of the wholesalers representing six lines of fabrics gave us his pitch as he would to the designers. This store has been so successful in bringing multiple wholesalers to a single site where retailers can view many fabrics, accessories, trims and hardware all in one location that they are planning on opening up two more sites.

The conference itself reenergizes you. The keynote speakers, breakout sessions were exciting and informational. My personal focus was on technology so I attended as many workshops as I could hoping to bring this new knowledge to my own classroom this coming year.

This year especially I enjoyed how the showcase exhibiting our teachers of the year, the different AAFCS communities, as well as a beautiful juried show of garments was held in the main hallway so everyone could see and be a part of it no matter where you were headed for.

I was very proud to represent Connecticut this year in gifting the incoming AAFCS president with our Betty Lamp Pin. At the closing luncheon I had the special privilege of giving the pin to Carolyn Barnhardt whom I graduated with from The University of Wisconsin Stout. Carolyn went on to become a professor at Stout, now is our AAFCS President for this year.

I ended my conference with a visit to the local extension agency where we did some home canning. This current site was a canning business for over 100 years. The county took it over and now anyone can set up a date to come in with produce or meat. The extension agent along with using HACCP food safety regulations help you each step of the way. I wish I lived closer, I would love to bring my students.

Next year the national conference will be held June 22-25, 2016 at the Hyatt Regency in Bellevue Washington. If you have not attended a national conference it is well worth while in the information, friendships, and networking as well as finding out what is trending in the field of Family and Consumer Sciences. Did I mention that it is tax deductible because it is a professional meeting?

Liaison to the UN by Anita Ferron, AAFCS/CT IFHE

Last year I attended a conference at the UN where four IFHE (International Federation of Home Economists) from different countries presented information about their programs explaining how they support the family. My contribution was that I brought the computer and projector. Just before the national AAFCS conference this year I was asked if I would be willing to be one of the representative to the UN. I needed permission from my district and I also asked if I could bring two students with me to the meeting. I am pleased to tell you I will be part of the Family Committee representing AAFCS for the next three years at the UN.

IFHE (International Federation of Home Economists) Anita Ferron, AAFCS/CT IFHE

Every four years IFHE holds a World Congress. On July 31 through August 6, 2016 the XXIII World Congress will be held in Daejeon, Korea. I am attending and I did put in a proposal to speak at the conference. I would love to have others join me. The early bird registration ends on March 31, 2016. The cost to attend the whole conference is \$700.00 as a member (includes all sessions for the whole week, Welcome Reception, Congress Banquet and a home visit) Membership fees are 230 euro or approximately \$255.00 for a 4 year membership enabling you to go to a two year planning conference. Nonmember registration for the same benefits is \$950.00. If you came as a guest the cost is \$300.00 which includes (Welcome Reception, opening ceremony, Key note session on Tuesday, Congress Banquet, and the home visit. I would love to have company. This is a wonderful opportunity to make connections worldwide. I look forward every two years to the planning meeting and every four years to see friends from around the world. Contact me for further information my email is below Anita Ferron ferrona@madison.k12.ct.us

Honor Our FCS Teachers and Professionals

Take the opportunity to nominate yourself or a colleague for Connecticut American Association of Family and Consumer Sciences (CT/AAFCS) TEACHER OF THE YEAR (TOY) or PROFESSIONAL OF THE YEAR (POY).

TEACHER OF THE YEAR 2017

CTAAFCS is looking for a teacher to highlight their program, a part of their program, and unique aspects of their program in an area of FCS content or community interaction.

Over the years, CT has had two National Teachers of the year!!

Visit website: www.ctaafcs.org and click the 'Awards' tab to get the Nomination Form. You will need to work with the teacher to complete the application ----

2017 – CT Teacher of the Year time line:

1. Nomination Form completed and postmarked March 15, 2016

To: Kathy Brophy, 35 Jennifers Way, Rocky Hill, CT 06067

2. Selection by Committee-2017 Teacher announced and honored at Annual CT/AAFCS Spring Meeting
3. 2016 Summer – Work on National Application Materials for National AAFCS
4. 2016 Fall – National Application submitted
5. 2017 Late June – Attend Annual AAFCS Conference as CT TOY

Selection is according to the AAFCS Guidelines. For help or if you have questions, call Kathy Brophy at 860-978-0088. **Nomination Form postmarked by MAR CH 15, 2016.**

2016 STUDENT SCHOLARSHIP

TEACHERS, PLEASE ENCOURAGE YOUR STUDENTS TO;
APPLY FOR THE AAFCS/CT SCHOLARSHIP.

Applications can be FOUND ONLINE AT <http://www.ctaafcs.org/>

The scholarship is for any high school senior that plans to major in a Family and Consumer Sciences field of study at a two or four year school of higher education.

One \$1000.00 scholarship will be awarded, in the possible categories:

- 1) FCS related field of study
- 2) Future FCS teacher

Send Completed Application by **March 15th** to:

Mrs. Becky Person
16 Niederwerfer Road
Broad Brook, CT 06016

Questions or if you need further information, please contact: Carole Christensen ~ (860)563.4038

Dressing from Corset to Gloves

American Association of Family & Consumer Sciences/Connecticut Affiliate

A Downton Abbey Tea ~ Saturday, October 17, 2015

Rocky Hill High School, Rocky Hill, Connecticut

11:00 am – 1:30 pm

THE FASHION, LIFE
AND ETIQUETTE
OF THE
VICTORIAN AND
EDWARDIAN ERAS

Tickets for **\$35.00 (pre-sale only)**

Enjoy an Edwardian Performance by *Kandie Carle*
After the presentation a light afternoon tea will be served with
sandwiches, scones and desserts

*Bring Your Own Tea Cup. Prizes awarded
to Best Hat and Best Dressed!*

All proceeds to benefit AAFCS/CT Scholarship Fund

2015 AAFCS/CT Registration Form

SDE

Name _____ Phone (_____) _____

Address _____ City _____ Zip _____

AAFCS Member # _____ e-mail address _____

Please indicate any special dietary needs _____

* If your school is paying by purchase order, complete the registration form and send, with purchase order number if available

REGISTRATION: Ticket ~ \$35.00

P.O. Pending # _____

Payment Enclosed \$ _____

Check # _____

☆☆Please return registration form, with check payable to AAFCS/CT Affiliate, by October 7, 2015☆☆

Mail to: **Karen Redanz**, 68 Mountain View Drive, Norwich, Connecticut 06360

OR e-mail to: redanzk@rockyhillps.com or kredanz94@gmail.com

OR Print registration form from the website: **ctaafcs.org**

Directions to Rocky Hill High School ~ 50 Chaplin Avenue, Rocky Hill, CT 06067

I – 84 East

Take **Exit 52** and merge onto **I-91 South**

Take **Exit 24** to merge onto **CT-99S / Silas Deane**

Hwy.toward Rocky Hill

Turn **RIGHT** onto Parsonage Street

Take first **LEFT** onto Chaplin Street

Destination will be on your **RIGHT**

I – 84 West

Charter Oak Bridge / NYC – CT-15 S

Merge onto **I-91 South**

Take **Exit 24** to merge onto **CT-99S / Silas Deane**

Hwy.toward Rocky Hill

Turn **RIGHT** onto Parsonage Street

Take first **LEFT** onto Chaplin Street

Destination will be on your **RIGHT**

I – 91 North Take **Exit 24** to merge onto **CT-99S / Silas Deane** Hwy.toward Rocky Hill

Turn **RIGHT** onto Parsonage Street

Take first **LEFT** onto Chaplin Street

Destination will be on your **RIGHT**